

Reversible Top Computer Desks



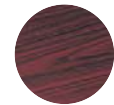
1934 with Mahogany Top Option.



1933 with Mahogany Top Option.



1931 with Medium Oak Top Option.



Mahogany



Medium Oak

Rev up your furnishings with reversible tops! A one-inch laminate top may be reversed between Mahogany and Medium Oak. Create a customized work area by combining different size tables according to your space and equipment requirements. The table is constructed with a black steel base, a full width 6-3/4"D steel shelf, and privacy panel. Cable routing cutouts are featured for installation along a wall.

Model	Description	W x D x H	Ship Weight
1930	36" x 28" Desk	35½ x 28 x 30"	54 lbs.
1931	48" x 28" Desk	47½ x 28 x 30"	70 lbs.
1933	Mobile Work Desk	53½ x 28 x 30"	75 lbs.
1934	Fax/Printer Stand	23½ x 28 x 30"	43 lbs.

Discount Code B

