

# Steel square boxes

## 4" SQUARE OUTLET BOXES – 30.3 CUBIC INCH CAPACITY

2 1/8" DEEP – FOR CONDUIT

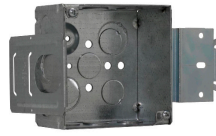
UL LISTED



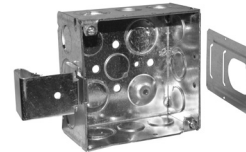
TP403/TP403PF



TP403BH



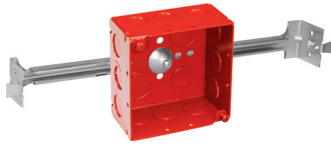
TP403MSB



TP403SSB



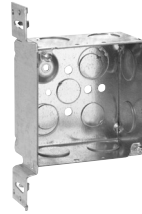
TP403RED



TP403REDBH



TP432



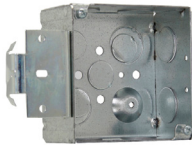
TP432VMS



TP434



TP438/TP831E



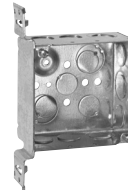
TP432MSB



TP434RED



TP451RED



TP451

Cat. #	Bracket	Description	Grounding method	Knockouts		16" Fixture weight (lbs.)	24" Fixture weight (lbs.)	Unit qty.	Wt. lbs. per 100
				Sides	Bottom				
TP403	-	Welded	Ground bump	8 - 1/2", 4 - 1/2" + 3/4" E	2 - 1/2", 2 - 1/2" + 3/4" E	-	-	25	84
TP403BH	-	Welded	Ground bump	8 - 1/2", 4 - 1/2" + 3/4" E	2 - 1/2", 2 - 1/2" + 3/4" E	50	50	25	84
TP403G <sup>ⓑ</sup>	-	Welded	Grnd bump w/screw	8 - 1/2", 4 - 1/2" + 3/4" E	2 - 1/2", 2 - 1/2" + 3/4" E	-	-	25	84
TP403MSB	MSB	Welded	Ground bump	8 - 1/2", 4 - 1/2" + 3/4" E	2 - 1/2", 2 - 1/2" + 3/4" E	-	-	25	95
TP403RED	-	Welded	Ground bump	8 - 1/2", 4 - 1/2" + 3/4" E	2 - 1/2", 2 - 1/2" + 3/4" E	-	-	25	84
TP403REDBH	-	Welded	Ground bump	8 - 1/2", 4 - 1/2" + 3/4" E	2 - 1/2", 2 - 1/2" + 3/4" E	50	50	25	84
TP403REDBSB	MSB	Welded	Ground bump	8 - 1/2", 4 - 1/2" + 3/4" E	2 - 1/2", 2 - 1/2" + 3/4" E	-	-	25	95
TP403PF <sup>Ⓒ</sup> <sup>Ⓔ</sup> <sup>Ⓕ</sup>	-	Welded	Ground bump	8 - 1/2", 4 - 1/2" + 3/4" E	2 - 1/2", 2 - 1/2" + 3/4" E	-	-	25	84
TP403SSB	SSB	Welded	Ground bump	8 - 1/2", 4 - 1/2" + 3/4" E	2 - 1/2", 2 - 1/2" + 3/4" E	-	-	25	95
TP432	-	Welded	Ground bump	8 - 3/4"	2 - 1/2", 2 - 1/2" + 3/4" E	-	-	25	84
TP432G <sup>Ⓒ</sup>	-	Welded	Grnd bump w/screw	8 - 3/4"	2 - 1/2", 2 - 1/2" + 3/4" E	-	-	25	84
TP432RED	-	Welded	Ground bump	8 - 3/4"	2 - 1/2", 2 - 1/2" + 3/4" E	-	-	25	84
TP432MSB	MSB	Welded	Ground bump	8 - 3/4"	2 - 1/2", 2 - 1/2" + 3/4" E	-	-	25	95
TP432REDBSB	MSB	Welded	Ground bump	8 - 3/4"	2 - 1/2", 2 - 1/2" + 3/4" E	-	-	25	95
TP432VMS	"VMS"	Welded	Ground bump	6 - 3/4"	2 - 1/2", 2 - 1/2" + 3/4" E	-	-	25	99
TP436	-	Welded	Ground bump	8 - 1"	2 - 1/2", 2 - 1/2" + 3/4" E	-	-	25	84
TP436G <sup>Ⓒ</sup>	-	Welded	Grnd bump w/screw	8 - 1"	2 - 1/2", 2 - 1/2" + 3/4" E	-	-	25	84
TP436MSB	MSB	Welded	Ground bump	8 - 1"	2 - 1/2", 2 - 1/2" + 3/4" E	-	-	25	95
TP434	-	Drawn	Ground bump	8 - 1/2", 4 - 3/4"	3 - 1/2", 2 - 3/4"	-	-	25	84
TP434G <sup>Ⓒ</sup>	-	Drawn	Grnd bump w/screw	8 - 1/2", 4 - 3/4"	3 - 1/2", 2 - 3/4"	-	-	25	84
TP434RED	-	Drawn	Ground bump	8 - 1/2", 4 - 3/4"	3 - 1/2", 2 - 3/4"	-	-	25	84
TP438	-	Drawn	Ground bump	4 - 1/2", 6 - 1/2" + 3/4" C	3 - 1/2", 2 - 3/4"	-	-	25	84
TP438G <sup>Ⓒ</sup>	-	Drawn	Grnd bump w/screw	4 - 1/2", 6 - 1/2" + 3/4" C	3 - 1/2", 2 - 3/4"	-	-	25	84
TP438PF <sup>Ⓔ</sup>	-	Drawn	Ground bump	4 - 1/2", 6 - 1/2" + 3/4" C	3 - 1/2", 2 - 3/4"	-	-	25	84
TP451	"VMS"	Welded	Ground bump	6 - 1/2", 3 - 1/2" + 3/4" E	2 - 1/2", 2 - 1/2" + 3/4" E	-	-	25	96
TP451G <sup>Ⓒ</sup>	"VMS"	Welded	Grnd bump w/screw	6 - 1/2", 3 - 1/2" + 3/4" E	2 - 1/2", 2 - 1/2" + 3/4" E	-	-	25	96
TP451PF <sup>Ⓔ</sup>	"VMS"	Welded	Ground bump	6 - 1/2", 3 - 1/2" + 3/4" E	2 - 1/2", 2 - 1/2" + 3/4" E	-	-	25	96
TP451RED	"VMS"	Welded	Ground bump	6 - 1/2", 3 - 1/2" + 3/4" E	2 - 1/2", 2 - 1/2" + 3/4" E	-	-	25	96
TP437	"VP"	Welded	Ground bump	6 - 1/2", 3 - 1/2" + 3/4" E	2 - 1/2", 2 - 1/2" + 3/4" E	-	-	25	98

Steel boxes

### Air Plenum

TP831 <sup>Ⓔ</sup>	-	Drawn	Ground bump	8 - 1/2", 4 - 3/4"	3 - 1/2", 2 - 3/4"	-	-	25	90
--------------------	---	-------	-------------	--------------------	--------------------	---	---	----	----

<sup>Ⓒ</sup> For Air Plenum (no mounting holes) - not UL Listed.

<sup>Ⓔ</sup> cUL Listed.

<sup>Ⓔ</sup> TP catalog numbers ending in PF include ground screw with pigtail lead.

<sup>Ⓔ</sup> CSA certified.