

## PRODUCT DATA SHEET



**PART NUMBER – BA300-30-11-84:** BRAH Electric, aftermarket direct replacement contactors for ABB A302-30-11-84, A-Line series, type A300, 3P, 3PH, 302A, 600V, complete with 120V AC coil, and 1 NO/1NC auxiliary contact, AC contactor, suitable for use with A-Line series motor control systems.

### PRODUCT SPECIFICATION

MAGNETIC CONTACTOR  
PART NO. BA300-30-11-84

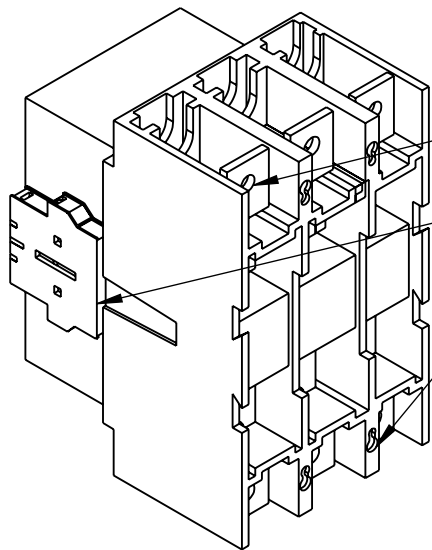
**Voltage Selection Charts  
BA300-XXXX**

|                |             |
|----------------|-------------|
| BA300-30-11    | 120V AC     |
| BA300-30-11-42 | 277V AC     |
| BA300-30-11-51 | 480V AC     |
| BA300-30-11-55 | 550/600V AC |
| BA300-30-11-80 | 220/240V AC |
| BA300-30-11-81 | 24V AC      |
| BA300-30-11-83 | 48V AC      |
| BA300-30-11-84 | 120V AC     |
| BA300-30-11-86 | 415/440V AC |

| TYPE             | VALUE (UNITS) | NOTES | COMMENTS |
|------------------|---------------|-------|----------|
| PHASE            | 3             |       |          |
| POLES            | 3             |       |          |
| VOLTAGE          | 600 (VAC)     |       |          |
| AMPERAGE         | 302 (A)       |       |          |
| COIL VOLTAGE MIN | 120 (VAC)     |       |          |
| COIL VOLTAGE MAX | 120 (VAC)     |       |          |

**Warranty:** All Products sold by BRAH Electric are guaranteed to be free of defect for a period of one year, under the condition that the product has been installed and operated properly. All items proven defective within the one year period will be replaced by BRAH Electric. In the event that we cannot provide a direct replacement, your monies will be refunded in full. We are not responsible for any consequential losses or damages outside of the defective product as well as any replacements or repairs performed by another party without our written authorization from BRAH Electric.

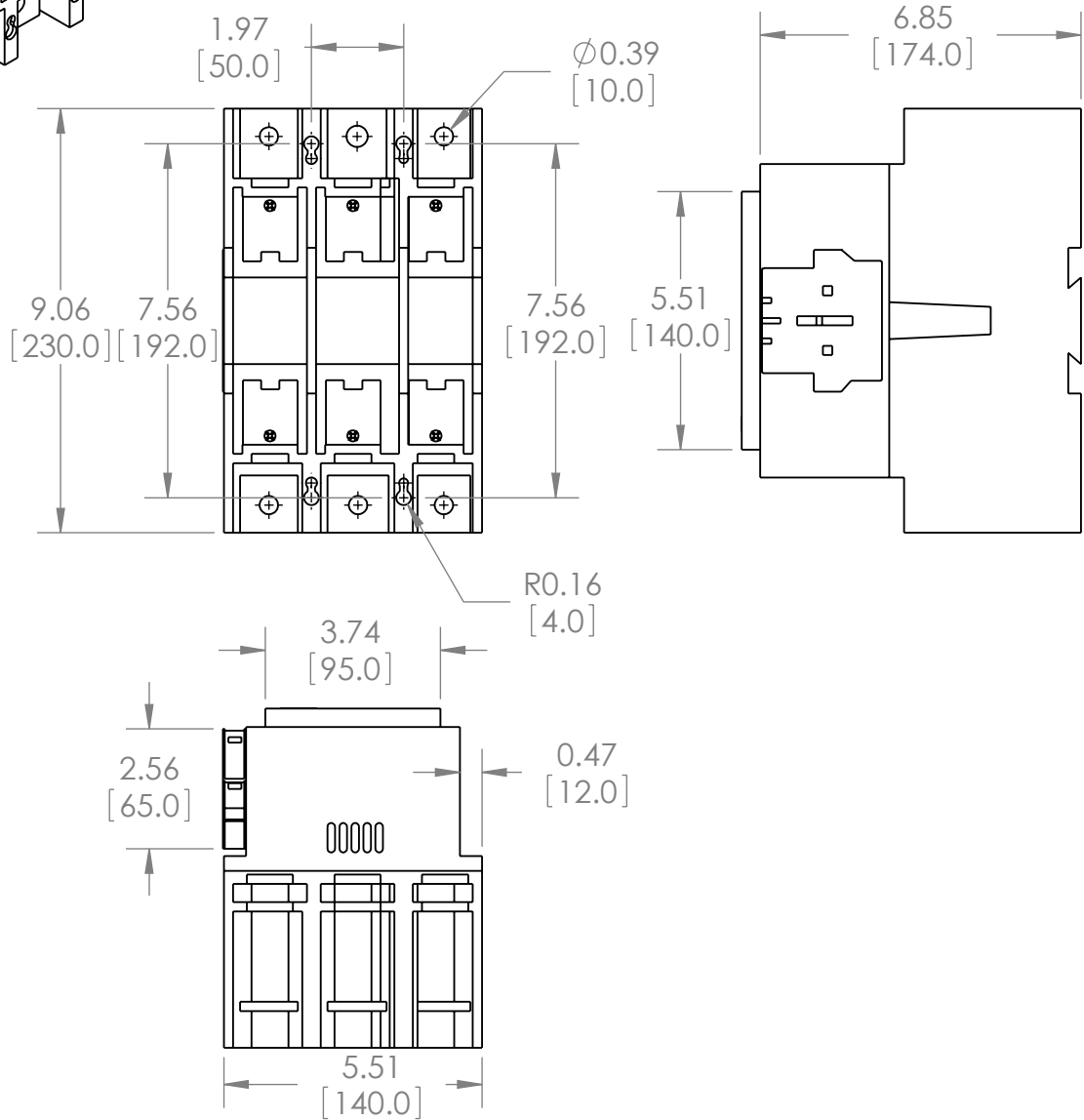
| REVISIONS |      |             |      |          |
|-----------|------|-------------|------|----------|
| ZONE      | REV. | DESCRIPTION | DATE | APPROVED |
|           |      |             |      |          |



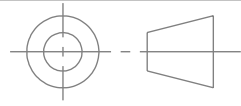
LOAD SIDE WIRE TERMINALS

AUXILIARY CONTACT BLOCK

MOUNTING HOLES



\*NOTE: BRAH ELECTRIC CONTACTOR BA300-30-11-84 IS AN AFTERMARKET DIRECT REPLACEMENT FOR A300-30-11-84, A-LINE SERIES. SUITABLE FOR USE WITH A-LINE SERIES MOTOR CONTROL SYSTEMS



**PROPRIETARY AND CONFIDENTIAL**

THE INFORMATION CONTAINED IN THIS DRAWING IS THE SOLE PROPERTY OF BRAH ELECTRIC. ANY REPRODUCTION IN PART OR AS A WHOLE WITHOUT THE WRITTEN PERMISSION OF BRAH ELECTRIC IS PROHIBITED.

UNLESS OTHERWISE NOTED  
ALL DIMENSIONS ARE IN INCHES  
METRIC UNITS ARE DISPLAYED  
BENEATH IN [ MM. ]

|                      |                     |
|----------------------|---------------------|
| MATERIAL             | MOLDED PLASTIC CASE |
| FINISH               | N/A                 |
| DO NOT SCALE DRAWING |                     |



**MAGNETIC CONTACTOR**

|            |                 |              |
|------------|-----------------|--------------|
| SIZE       | DWG. NO.        | REV.         |
| <b>A</b>   | BA300-30-11-84  | <b>A</b>     |
| SCALE: 1:4 | WEIGHT: 3.2 LBS | SHEET 1 OF 1 |