

Series 5

Die cast aluminum conduit outlet bodies, covers & gaskets

Series 5 die cast copper-free aluminum conduit bodies, covers and gaskets are available for use with rigid or EMT conduit (with set screw). Conduit bodies are available in trade sizes 1/2" to 4", in the most popular conduit body shapes (C, LB, LL, LR, T) and 1/2" to 2" in TB and X shapes. The Series 5 family is available as components or pre-packaged in various configurations as a SnapPack™ assembly. In addition, Series 5 is completely interchangeable with other manufacturers.

Applications:

- Act as pull outlets for conductors being installed
- Provide openings for making splices and taps in conductors
- Act as mounting outlets for lighting fixtures and wiring devices
- Connect conduit sections
- Provide taps for branch conduit runs
- Make 90° bends in conduit runs
- Provide for access to conductors for maintenance and future system changes

Features:

- Die cast copper-free aluminum construction is lightweight and corrosion-resistant for long, reliable service
- Epoxy powder coat finish provides additional corrosion resistance and an aesthetically-pleasing appearance
- Conduit bodies are supplied with threaded hubs for use with rigid/IMC conduit or as a combination body
- Combination bodies are supplied with tri-head set screws (slotted, Phillips, Robertson) for use with EMT or rigid/IMC conduit on trade sizes 1/2" to 2"
- Domed aluminum cover provides additional cubic capacity
- Perforated center gasket that can be easily removed, if desired
- SnapPack™ available in choice of three configurations to match customer preferences

Certifications and compliances:

- UL Listed
- cUL Listed
- UL File No. E-15022
- Suitable for wet locations (1/2" to 2" rigid bodies)
- Suitable for NEMA 4 (1/2" to 1" rigid bodies with integral gasket cover)
- Suitable for NEMA FB1 (1 1/4" to 4" rigid bodies with integral gasket cover)

Standard materials and finishes:

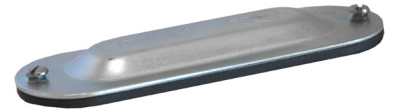
- Bodies – copper-free aluminum with epoxy powder paint
- Covers – aluminum with stainless steel screws, natural
- Gaskets – neoprene, natural



Series 5

Integral gasket covers

The sheet aluminum covers feature a raised dome with stainless steel screws supplied with nylon washers and a gasket for simplifying installation—reducing inventory and labor costs. These innovative covers are UL and cUL Listed and are NEMA 4 rated 1/2" to 1" trade sizes with rigid bodies.



SnapPack™

Designed for ordering and receiving convenience, the SnapPack combines a body, gasket and sheet aluminum cover in a single assembly.

- 1 Rigid body with traditional cover and gasket (e.g. LB15 CGN)



- 2 Combination body with traditional cover and gasket (e.g. LB15 MTC)



- 3 NEMA 4 rigid body with integral gasketed cover (e.g. X15 ICG)



Series 5

Die cast aluminum conduit outlet bodies, covers & gaskets



TYPE LL

Size	Outlet body		SnapPack			Internal vol. in cu. in.	Unit qty.	Wt. lbs. per 100 [Ⓚ]	Max. no. of conductors
	Cat. # Rigid/IMC	Cat. # Combo EMT, rigid/IMC	Cat. # Rigid/IMC body, traditional cover & gasket	Cat. # Combo EMT, body, traditional cover & gasket	Cat. # NEMA 4 rigid/IMC body, integral cover & gasket				
1/2"	LL15	LL15 MT	LL15 CGN	LL15 MTC	LL15 ICG (4.5 Cu. In.)	4.35	10	30	-
3/4"	LL25	LL25 MT	LL25 CGN	LL25 MTC	LL25 ICG (7.5 Cu. In.)	7.30	10	48	#6 AWG
1"	LL35	LL35 MT	LL35 CGN	LL35 MTC	LL35 ICG (10.8 Cu. In.)	12.20	5	64	3 #4 AWG
1 1/4"	LL45	LL45 MT	LL45 CGN	LL45 MTC	-	35.80	2	140	3 #2 AWG
1 1/2"	LL55	LL55 MT	LL55 CGN	LL55 MTC	-	35.80	2	160	3 #1/0 AWG
2"	LL65	LL65 MT	LL65 CGN	LL65 MTC	-	69.70	1	270	3 #3/0 AWG
2 1/2"	LL75	-	LL75 CGN	-	-	69.70	1	500	3 #300MCM
3"	LL85	-	LL85 CGN	-	-	186.00	1	600	3 #350MCM
3 1/2"	LL95	-	LL95 CGN	-	-	306.00	1	900	3 #350MCM
4"	LL105	-	LL105 CGN	-	-	308.00	1	1000	3 #350MCM

[Ⓚ]Weight lbs. per 100 is listed for outlet body only.



TYPE C

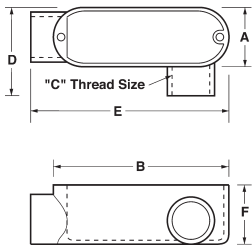
Size	Outlet body		SnapPack			Internal vol. in cu. in.	Unit qty.	Wt. lbs. per 100 [Ⓚ]	Max. no. of conductors
	Cat. # Rigid/IMC	Cat. # Combo EMT, rigid/IMC	Cat. # Rigid/IMC body, traditional cover & gasket	Cat. # Combo EMT, body, traditional cover & gasket	Cat. # NEMA 4 rigid/IMC body, integral cover & gasket				
1/2"	C15	C15 MT	C15 CGN	C15 MTC	C15 ICG (4.5 Cu. In.)	4.35	10	27	-
3/4"	C25	C25 MT	C25 CGN	C25 MTC	C25 ICG (7.5 Cu. In.)	7.30	10	40	#6 AWG
1"	C35	C35 MT	C35 CGN	C35 MTC	C35 ICG (10.8 Cu. In.)	12.20	5	64	3 #4 AWG
1 1/4"	C45	C45 MT	C45 CGN	C45 MTC	-	32.30	2	165	3 #2 AWG
1 1/2"	C55	C55 MT	C55 CGN	C55 MTC	-	33.80	2	150	3 #1/0 AWG
2"	C65	C65 MT	C65 CGN	C65 MTC	-	69.50	1	270	3 #2/0 AWG
2 1/2"	C75	-	C75 CGN	-	-	69.50	1	500	3 #250MCM
3"	C85	-	C85 CGN	-	-	188.00	1	600	3 #250MCM
3 1/2"	C95	-	C95 CGN	-	-	307.00	1	900	3 #300MCM
4"	C105	-	C105 CGN	-	-	309.00	1	1000	3 #300MCM

[Ⓚ]Weight lbs. per 100 is listed for outlet body only.

Series 5

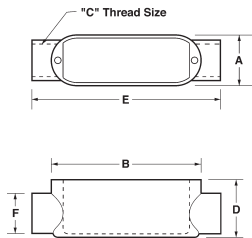
Die cast aluminum conduit outlet bodies, covers & gaskets

Series 5



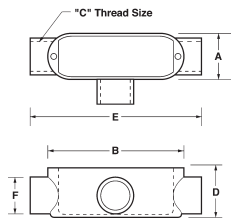
Type LL dimensions (in inches) – threaded & set screw:

Size	A	B	C	D	E	F
1/2"	1.31	3.87	0.50	2.06	4.40	1.40
3/4"	1.53	4.67	0.75	2.28	5.07	1.64
1"	1.74	5.37	1.00	2.68	5.94	1.90
1 1/4"	2.49	7.23	1.25	3.50	7.87	2.85
1 1/2"	2.49	7.23	1.50	3.50	7.87	2.85
2"	3.10	9.46	2.00	3.83	10.20	3.41
2 1/2"	4.50	12.22	2.50	6.00	13.14	4.00
3"	4.65	12.22	3.00	6.10	13.00	4.70
3 1/2"	5.42	14.83	3.50	6.05	15.35	5.43
4"	5.42	14.83	4.00	6.05	15.35	5.43



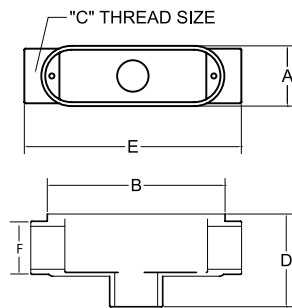
Type C dimensions (in inches) – threaded & set screw:

Size	A	B	C	D	E	F
1/2"	1.31	3.87	0.50	1.40	4.82	1.07
3/4"	1.53	4.67	0.75	1.64	5.50	1.35
1"	1.74	5.37	1.00	1.90	6.44	1.67
1 1/4"	2.49	7.23	1.25	2.73	8.45	2.27
1 1/2"	2.49	7.23	1.50	2.73	8.45	2.27
2"	3.10	9.46	2.00	3.41	10.71	2.91
2 1/2"	4.50	12.22	2.50	4.30	14.00	3.50
3"	4.65	12.22	3.00	4.66	13.80	4.13
3 1/2"	5.42	14.83	3.50	5.36	16.10	5.30
4"	5.42	14.83	4.00	5.36	16.10	5.30



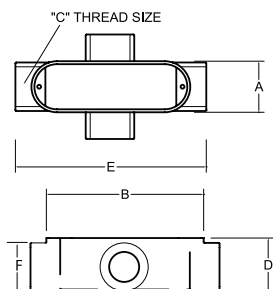
Type T dimensions (in inches) – threaded & set screw:

Size	A	B	C	D	E	F
1/2"	1.31	3.87	0.50	1.40	4.82	1.07
3/4"	1.53	4.67	0.75	1.64	5.40	1.35
1"	1.74	5.37	1.00	1.90	6.33	1.15
1 1/4"	2.49	7.23	1.25	2.73	8.45	2.27
1 1/2"	2.49	7.23	1.50	2.73	8.45	2.27
2"	3.10	9.46	2.00	3.41	10.71	2.91
2 1/2"	4.50	12.22	2.50	4.00	14.00	3.50
3"	4.65	12.22	3.00	4.66	13.80	4.13
3 1/2"	5.42	14.83	3.50	5.40	16.00	5.30
4"	5.42	14.83	4.00	5.40	16.00	5.30



Type TB dimensions (in inches) – threaded & set screw:

Size	A	B	C	D	E	F
1/2"	1.31	3.92	0.50	2.10	4.72	1.07
3/4"	1.53	4.64	0.75	2.40	5.51	1.28
1"	1.74	5.38	1.00	2.77	6.47	1.56
1 1/4"	2.49	7.24	1.25	3.53	8.25	1.99
1 1/2"	2.49	7.24	1.50	3.53	8.25	2.27
2"	3.10	9.50	2.00	4.50	10.50	2.91



Type X dimensions (in inches) – threaded & set screw:

Size	A	B	C	D	E	F
1/2"	1.31	3.92	0.50	1.37	4.72	1.07
3/4"	1.53	4.64	0.75	1.63	5.51	1.28
1"	1.74	5.38	1.00	1.88	6.47	1.56
1 1/4"	2.49	7.24	1.25	2.51	8.25	1.99
1 1/2"	2.49	7.24	1.50	2.50	8.25	2.27
2"	3.10	9.50	2.00	3.40	10.50	2.91