

Beam Clamps, Straps, Clamps and Clamp Backs for Rigid Metal Conduit or IMC

CEC:
Listed for Ordinary Locations

Application

- Provides spacing from mounting surface when used with malleable iron pipe straps.

Standard Materials

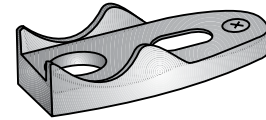
- Malleable iron

Standard Finishes

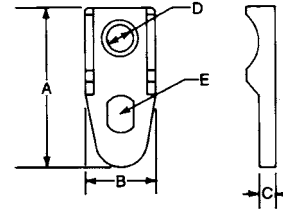
- Hot dip galvanized

NEC/CEC Certifications and Compliances

- CSA Standard: C22.2 No. 18
- CSA Certified: 009795



Clamp Back



Trade Size (Inches)	Dimensions in Millimeters (Inches)					Catalog Number
	A	B	C	D	E	
1/2	36.58 (1.44)	17.53 (0.69)	6.35 (0.25)	9.65 (0.38)	9.65 (0.38) x 12.7 (0.50)	141G
3/4	63.50 (2.50)	28.70 (1.13)	6.35 (0.25)	9.65 (0.38)	14.22 (0.56) x 11.18 (0.44)	142G
1	81.03 (3.19)	23.88 (0.94)	7.87 (0.31)	9.65 (0.38)	14.22 (0.56) x 11.18 (0.44)	143G
1-1/4	93.73 (3.69)	36.58 (1.44)	7.87 (0.31)	12.70 (0.50)	14.22 (0.56) x 13.46 (0.53)	144G
1-1/2	100.08 (3.94)	38.10 (1.50)	7.87 (0.31)	14.22 (0.56)	15.00 (0.59) x 18.29 (0.72)	145G
2	130.3 (5.13)	50.80 (2.00)	9.65 (0.38)	14.22 (0.56)	16.00 (0.63) x 20.57 (0.81)	146G
2-1/2	146.05 (5.75)	63.50 (2.50)	9.65 (0.38)	0.76 (0.03)	16.00 (0.63) x 28.7 (1.13)	147G
3	181.10 (7.13)	71.37 (2.81)	9.65 (0.38)	11.94 (0.47)	16.00 (0.63) x 28.7 (1.13)	148G
3-1/2	203.20 (8.00)	81.79 (3.22)	11.18 (0.44)	11.94 (0.47)	17.53 (0.69) x 34.04 (1.34)	149G
4	222.25 (8.75)	87.38 (3.44)	9.65 (0.38)	11.94 (0.47)	18.29 (0.72) x 32.51 (1.28)	150G
5	255.52 (10.06)	93.73 (3.69)	12.70 (0.50)	13.46 (0.53)	21.34 (0.84) x 33.27 (1.31)	151G
6	152.40 (6.00)	304.80 (12.00)	100.08 (3.94)	14.22 (0.56)	31.75 (1.25) x 50.80 (2.00)	152G