



<b>EAN:</b>	4013288210456	<b>Size:</b>	130x44x22 mm
<b>Part number:</b>	05004537001	<b>Weight:</b>	105 g
<b>Article number:</b>	8790 HMB Deep	<b>Country of origin:</b>	TW
		<b>Customs tariff number:</b>	82042000

- Long sockets for low-lying screwdriving, often even with protruding threaded rods in small spaces
- Hexagonal profile enables precise bolting with high power transmission and preserves the profile
- With Take it easy tool finder: colour coding by size
- Knurling at lower end to enable easy gripping when used in manual applications
- For manual and machine operation (non-impact), ball intercept ring
- Made of matt chromed chrome-vanadium

The Wera manual and machine socket (ISO 2725 part 3) can be used in manual and machine operations. With Take it easy tool finder with colour coding by size - for quick and easy identification of the required tool. Slip-proof for easy grip even with oily hands. With ball stop groove. For external hexagon screws and bolts. Made of matte chrome-plated chrome-vanadium.

**Web link**

<https://www.wera.de/en/05004537001>

Wera - 8790 HMB Deep  
05004537001 - 4013288210456

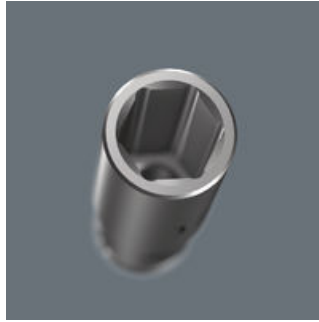
Wera Werkzeuge GmbH  
Korzter Straße 21-25  
D-42349 Wuppertal  
Tel: +49 (0)2 02 / 40 45-0  
E-Mail: [info@wera.de](mailto:info@wera.de)

#### Long design



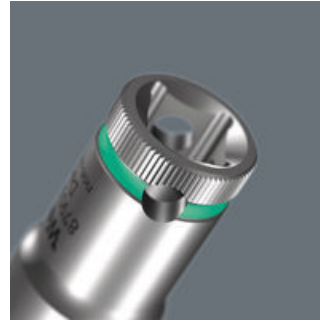
Thanks to the long design of the sockets, even couplings in tight spaces can be reached. Screwdriving at protruding thread rods can also be possible.

#### Profile-friendly power transmission



The hexagon profile offers the transmission of high forces and loads the edges of the bolt or the screw head less than a double hexagon profile. Fine-toothed ratchets also make use of a double hexagon profile superfluous, even in confined spaces, thanks to their small return angle.

#### Knurling



Knurling on lower end for more grip when used manually.

#### Chrome vanadium steel



The insert tools are suitable for high loads thanks to their chrome-vanadium steel design.

#### Take it easy tool finder system



Take it easy tool finder system - with profile and size colour-coding for quick and easy tool selection. Colour-coded system for hexagon drive screws (L-Keys, Zyklop bit sockets), external hex drive screws and nuts (Joker wrenches, Zyklop sockets and Zyklop bit sockets with holding function), and TORX® drive screws (L-Keys, Zyklop bit sockets).



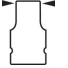

#### Web link

<https://www.wera.de/en/05004537001>

Wera - 8790 HMB Deep  
05004537001 - 4013288210456

Wera Werkzeuge GmbH  
Korzter Straße 21-25  
D-42349 Wuppertal  
Tel: +49 (0)2 02 / 40 45-0  
E-Mail: [info@wera.de](mailto:info@wera.de)

Further versions in this product family:

					
		mm	mm	mm	mm
05004530001	leuchtpink_232C	8.0	64.0	12.2	17.0
05004531001	gruen_363C	9.0	64.0	13.5	17.0
05004532001	leuchtgelb_yellowC	10.0	64.0	14.5	17.0
05004533001	cyan_2985C	11.0	64.0	15.7	17.0
05004534001	schwarz_blackC	12.0	64.0	16.5	18.0
05004535001	tuerkis_339C	13.0	64.0	19.0	17.0
05004536001	pink_241C	14.0	64.0	20.0	18.0
<b>05004537001</b>	<b>weiss</b>	<b>15.0</b>	<b>64.0</b>	<b>22.0</b>	<b>20.0</b>
05004538001	violett_2735C	16.0	64.0	22.0	20.0
05004539001	rot_200C	17.0	64.0	24.0	22.0
05004540001	leuchtgruen_375C	18.0	64.0	26.0	23.0
05004541001	blau_307C	19.0	64.0	26.0	23.0
05004542001	leuchtpink_232C	20.0	64.0	28.0	25.0
05004543001	gruen_363C	21.0	64.0	28.0	25.0
05004544001	gelb_123C	22.0	64.0	30.0	26.0

**Web link**<https://www.wera.de/en/05004537001>Wera - 8790 HMB Deep  
05004537001 - 4013288210456Wera Werkzeuge GmbH  
Korzter Straße 21-25  
D-42349 Wuppertal  
Tel: +49 (0)2 02 / 40 45-0  
E-Mail: info@wera.de