

Steel switch boxes

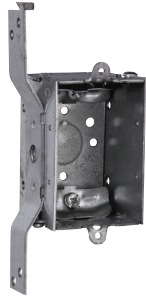
2" DEEP – GANGABLE – 10.0 CUBIC INCH CAPACITY

2" WIDE x 3" LONG

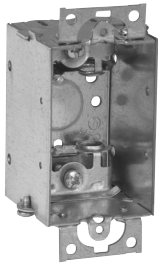
UL LISTED



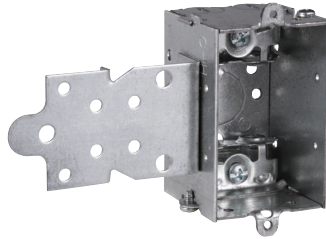
TP116



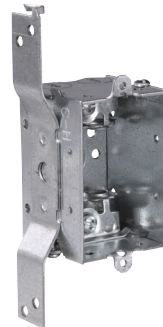
TP118



TP120



TP123



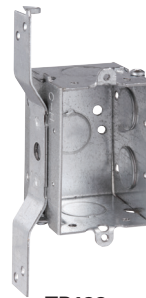
TP124



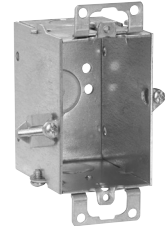
TP126



TP130



TP132



TP131 Hold-tite

Steel boxes

Cat. #	Bracket	Ears	Knockouts			Unit qty.	Wt. lbs. per 100
			Each end	Each side	Bottom		
For non-metallic cable – clamps in each end							
TP116	-	Yes	2 - cable	-	1 - 1/2"	50	53
TP118	"S", set 5/8"	-	2 - cable	-	1 - 1/2"	50	60
For armored & metal-clad (MCI) cable – clamps in each end							
TP120 ^A	-	Yes	2 - cable	-	1 - 1/2"	50	54
TP123 ^A	"F", set 1/2"	-	2 - cable	-	1 - 1/2"	50	63
TP124 ^A	"S", set 5/8"	-	2 - cable	-	1 - 1/2"	50	61
For conduit – no clamps, flush device							
TP126	-	-	1 - 1/2"	2 - 1/2"	1 - 1/2"	50	47
TP130	-	Yes	1 - 1/2"	2 - 1/2"	1 - 1/2"	50	48
TP130G ^F	-	Yes	1 - 1/2"	2 - 1/2"	1 - 1/2"	50	48
TP132	"S", set 5/8"	-	1 - 1/2"	2 - 1/2", 1 Side	1 - 1/2"	50	58
TP132G ^F	"S", set 5/8"	-	1 - 1/2"	2 - 1/2", 1 side	1 - 1/2"	50	58
TP131	Hold-tite	Yes	1 - 1/2" - T	-	1 - 1/2"	50	52
TP131G ^F	Hold-tite	Yes	1 - 1/2" - T	-	1 - 1/2"	50	52

^AUL approved for use with aluminum interlocking grounding metal-clad cable, Type MCIA (Southwire MCAP™). MCAP™ is a registered trademark of Southwire Company.

^FCSA certified. G indicates ground screw installed.