



Post Office Box 97
 Benton Harbor, Michigan
 Ph: 269/926-6171
 Fax: 269/925-8288

PART NUMBER:

STD128

REVISION:

J

Model Number	MAX. PRESS.		MAX. SPEED	HP	kW	Net Wt.	
	bar.	PSI				lbs.	kg
4AM-RV-75-GR25	5.5	80	200 RPM	1.7	1.25	28	12.7

SOUND LEVEL 87 dB(A) MAX.

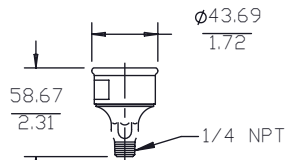
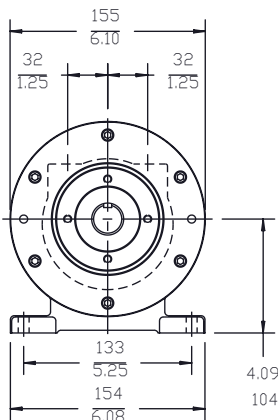
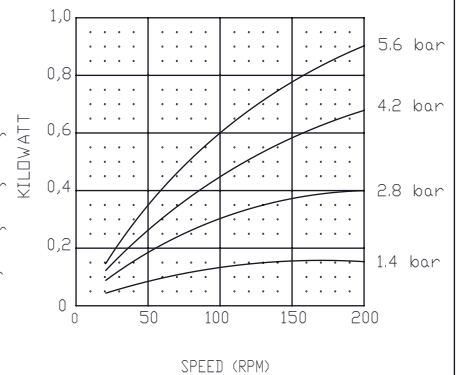
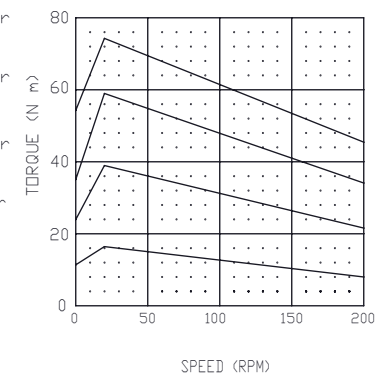
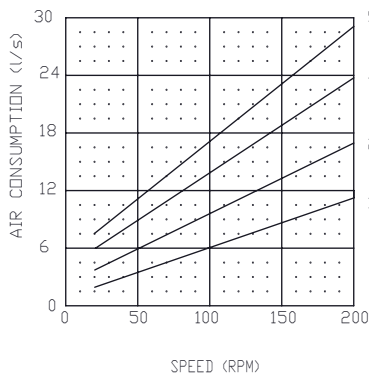
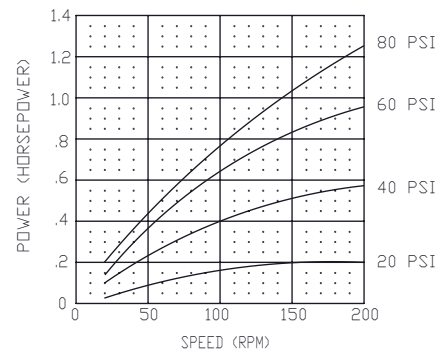
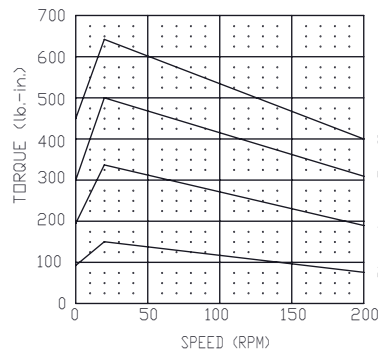
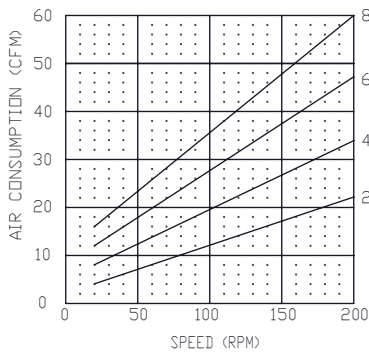
NORMAL AMBIENT +1°C. - 120°C.

RELATIVE HUMIDITY 0% - 100%

ENVIRONMENT HAZARDOUS AMBIENT COMBUSTIBLE
GAS AND DUST +1±C TO +40±C

CONFORMS TO EUROPEAN STANDARD EN13463-1 NON-ELECTRICAL
 EQUIPMENT FOR EXPLOSIVE ATMOSPHERES GROUP II CAT 2
 (GAS & DUST), PROTECTED BY CONSTRUCTION
 (SURFACE TEMP RATED 135±C)

TECHNICAL DATA SUBJECT TO CHANGE
 WITHOUT NOTICE.



MUFFLER ASM.
 (SHIPPED UNATTACHED)

