

## 0100

.038" tip diameter straight for removing internal rings.



## 0200

.038" tip diameter straight for removing external rings.



## 0300

.070" tip diameter straight for removing internal rings.



## 0400

.070" tip diameter straight for removing external rings.



## 0500

.090" tip diameter straight for removing internal rings.



## 0600

.090" tip diameter straight for removing external rings.



## 7295

### Retaining Ring Pliers

The "squeeze-lock" ratchet action of this tool locks retaining rings in position, making removal and installation easy. It features cushioned handles to ensure a secure grip.

- Will handle rings 3/16" thick and up to 4" in diameter.
- Pliers is 12" long.



**211051** Pair of replacement tips.

## 7313

### Retaining Ring Pliers

This tool removes the external retaining rings used in transmissions, differentials and other automotive components.

- Maximum spread is 1-1/16" and 7-3/4" long.



## 714

### Horseshoe Lock Ring Pliers

This ruggedly built pliers is designed to spread and remove horseshoe lock rings used on hydraulic brakes, differentials, transmissions, and CV joints.

- Handles are 8" long.



## 7412K

### Retaining Ring Pliers Set

This set includes 12 of our most popular retaining ring pliers, in sizes for automotive applications. Tips include straight, 45°, and 90° angles in four different sizes (.038, .047, .070, and .090" diameter).

- Includes a sturdy plastic organizer box.



## 4512

### Snap Ring Pliers Set – Internal/External

- For internal or external snap rings; thumbscrew permits quick conversion.
- Made of heavy-gauge tempered steel.
- Includes two stainless steel handled picks.
- Contained in a blow-molded plastic storage case.

## 4513

### Heavy-Duty Snap Ring Pliers Set (2 piece)

- Heat treated steel "circlip" pliers for large equipment repair.
- Replaceable tips and spring ratchet locking mechanism to securely hold against snap ring tension.
- Internal pliers' capacity 3-1/16" to 6-1/4" (78 mm to 159 mm) snap rings.
- External pliers' capacity 3-1/2" to 6-1/2" (89 mm to 165 mm) snap rings.
- Blow-molded storage case includes extra sets of replaceable tips.
- Overall length 16"; handle length 12-1/2".



### No. 4513 includes:

| Tool No. | Description                  |
|----------|------------------------------|
| 4513-1   | Internal snap ring pliers    |
| 4513-2   | External snap ring pliers    |
| 4513-3   | (2) .12" (3 mm) straight tip |

| Tool No. | Description              |
|----------|--------------------------|
| 4513-4   | (2) .12" (3 mm) 45° tips |
| 4513-5   | (2) .12" (3 mm) 90° tips |
| 4513-6   | 4 tip retaining screws   |



## 7410

### Retaining Ring Pliers with replaceable tips

An ideal tool for any transmission shop, this 13" long pliers with a maximum spread of 2.5" features replaceable tips and a spring-return handle.

## 214903

Set of replacement tips.

### No. 7412K Includes:

| Tool No. | Description          |
|----------|----------------------|
| 1120     | .038" dia., straight |
| 1125     | .038" dia., 45°      |
| 1131     | .038" dia., 90°      |
| 1320     | .047" dia., straight |
| 1325     | .047" dia., 45°      |
| 1329     | .047" dia., 90°      |
| 1340     | .070" dia., straight |
| 1345     | .070" dia., 45°      |
| 1349     | .070" dia., 90°      |
| 1560     | .090" dia., straight |
| 1565     | .090" dia., 45°      |
| 1569     | .090" dia., 90°      |

All items can be purchased separately.

### No. 4512 includes:

| Tool No. | Description                |
|----------|----------------------------|
| 4512-1   | .090" tip, straight pliers |
| 4512-2   | .090" tip, 90° pliers      |
| 4512-3   | .070" tip, straight pliers |
| 4512-4   | .070" tip, 90° pliers      |
| 4512-5   | .047" tip, straight pliers |
| 4512-6   | .047" tip, 90° pliers      |
| 4512-7   | .038" tip, straight pliers |
| 4512-8   | .038" tip, 90° pliers      |
| 4512-9   | straight tip pick          |

## 4512-10

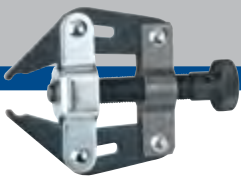
90° tip pick  
All items can be purchased separately.

## 4514

### Mini Snap Ring Pliers Set (4 piece)

- Service S-ring and R-ring clips, internal or external, straight or angled. Ruggedly built of heat-treated chrome molybdenum steel.
- Set includes two internal snap ring pliers (one straight, one 45°) and two external snap ring pliers (one straight, one 45°).
- All pliers have .038" (1.0mm) diameter tips.
- Overall length 3"; handle length 2".





**4758  
Motorcycle/ATV Chain Tensioner**

- Tool is designed to work on drive chains found on motorcycles and all-terrain vehicles (ATVs). Fits the following size chains: 428, 520, 525, 528, and 530.
- Tool jaws fit in chain link ends. Tightening the forcing screw pulls the jaws together to hold the chain for easy removal or installation of the chain connector or master link.



**714  
Horseshoe Lock Ring Pliers**

These pliers feature 8" handles and are designed to spread and remove horseshoe style lock rings found on engines, transmissions, and chassis.



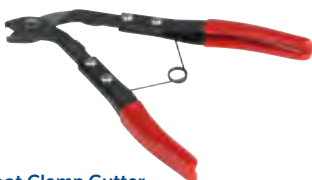
**7313  
Retaining Ring Pliers**

These pliers are 7-3/4" long and are designed to spread and remove retaining rings found on engines, transmissions, and chassis. Maximum spread is 1- 1/16".



**4623  
CV Joint Banding Tool and Cutter**

Use to install and tighten the "band-it" or strap style clamps found on CV joint boots, steering gear boots, or hoses. Tighten the band by turning the handle on the tool; use a socket or wrench on the handle to torque the band to OE specifications. When the boot clamp has been tightened to specs, cut the band to the correct length by flipping the lever (at the front of the tool) forward.



**4721  
CV Boot Clamp Cutter**

Designed to easily cut the CV boot clamp without damaging the boot. Will cut boot clamps up to 10 mm wide and .7 mm thick. Handles are spring loaded to the open position to allow easy access to the clamp.



**4527  
5-Ton Pressure Beam Bearing Splitter Kit**

Single point of adjustment allows quick attachment of 3" splitter to the bushing or bearing. Pressure beam is used in conjunction with interchangeable legs. Includes carry case.



**7790  
Flange Puller Set (48 piece)**

- Versatile puller capable of removing a wide variety of components having tapped pulling holes such as gears, pulleys, etc.
- Capable of handling 2- or 3-way bolt pulling applications.
  - Puller flange: adapts to bolt circle dia. of 1-1/2" to 4-5/8".
  - Forcing screw: 5-5/8" lg., 5/8-18 thread.
  - Shaft protector: 1-3/16" dia. x 3/4" thick.



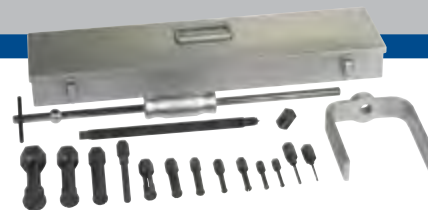
**525  
Flange-Type Puller Combination**

Two specialty pullers in one box. You get a flange-type puller for removal of parts with two or three tapped holes. You also get a pulley and flywheel puller. 525 includes: flange-type puller along with puller with four sets of cap screws.



**5049  
Pilot Bearing Puller**

Make quick work of pulling stubborn, rusted pilot bearings. Fits 1" I.D. bearings. The puller's forcing screw expands the jaws inside the bearing and simultaneously pushes against the bottom of the blind hole.



**981  
Blind Hole Puller Set**

This set provides a complete selection of expanding collets ranging in size from 5/16" to 1-3/4". Collet is placed through bore of part to be removed, then expanded with actuator pin so that lips of collet secure a positive grip for pulling. Force is exerted by means of a forcing screw and a bridge assembly or a slide hammer. Individual pieces can be ordered separately.

**1037  
7-Ton Grip-O-Matic Puller**

Mechanical Grip-O-Matic® Puller Remove and install parts for fast, effective repairs. The puller is forged from quality steel, heat treated, and subjected to rigorous tests which exceed their rated capacity.

- 7-Ton, 2/3-Jaw
- Max. Reach 5" Max. Spread 10-1/2"
- Screw Size 11/16" - 18 x 9"
- Jaw Thickness Upper 5/16" Lower 11/32"
- Jaw Width Upper 1" Lower 1"



**4532  
7-Ton Multi Purpose Bearing and Puller Set**

- Offers a bearing/pulley tool solution featuring a classic "H" Bar style puller block accommodating 7" to 11" application spread.
- Comes with 2 sets of forged jaws for a pulling reach range of 5" to 9" - tempered for heavy-duty applications. Two forcing screws are included for short and long pulls.
- Where a Push Puller is the best pulling choice and threaded holes are not available, the 4532 provides technicians and shops with a solution for many applications like side bearings, alternators, generators, power steering and crankshaft pulleys.
- Deep set works excellent for pulling the primary plate from the transmission