

# Ground Clamps

Universal Ground Clamp Accessories

**NEC:**  
Listed for Ordinary Locations

## Applications

- For use with the universal ground clamps to connect grounding conductors run bare, in armor, or in conduit. Fits all basic ground clamp systems.

## Standard Materials

- Type GH-G - Malleable Iron, steel screws
- Type GH-B - cast bronze, brass screws

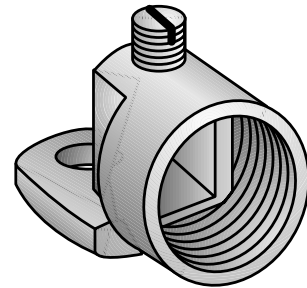
## Standard Finishes

- Type GH-G - hot dip galvanized, steel screws - zinc electroplated

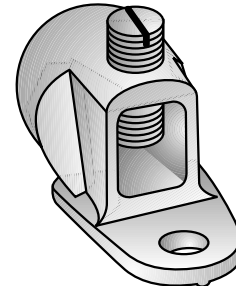
## NEC Certifications and Compliances

- UL Standard: 514A
- UL Listed: E-24264
- Fed. Spec: W-F-406E

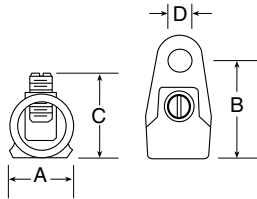
NOTE: All cast bronze and brass accessories are suitable for direct burial.



**Type GH-G**  
Malleable Iron – Hot Dip Galvanized



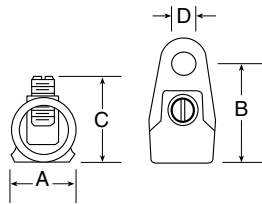
**Type GH-B**  
Cast Bronze



**Type GH**

Trade Size (Inches)	Conductor Range AWG/kcmil		Dimensions in Millimeters (Inches)				Malleable Iron Catalog Number	Cast Bronze Catalog Number
	Min.	Max.	A	B	Max. C	D		

### GROUND HUBS



1/2	8	2	25.4 (1.00)	38.1 (1.50)	35.1 (1.38)	9.7 (0.38)	<b>GH-50G</b>	<b>GH-50B</b>
3/4	4	2/0	31.8 (1.25)	47.8 (1.88)	42.9 (1.69)	9.7 (0.38)	<b>GH-75G</b>	<b>GH-75B</b>
1	1	250	38.1 (1.50)	54.1 (2.13)	55.6 (2.19)	9.7 (0.38)	<b>GH-100G</b>	<b>GH-100B</b>
1-1/4	4/0	500	47.8 (1.88)	63.5 (2.50)	68.3 (2.69)	9.7 (0.38)	<b>GH-125G</b>	<b>GH-125B</b>