



EAN:	4013288225177	Size:	405x185x55 mm
Part number:	05150181001	Weight:	1077 g
Article number:	9781	Country of origin:	DE (05)
		Customs tariff number:	82032000

- Durable foam insert, each tool has its own place; two-coloured, missing tools will quickly be noticed
- High-quality, durable foam insert without chemical vapours
- Optimum fit for the best possible removal of the tools from the foam insert
- Water- and oil-repellent, low maintenance and easy to clean
- Protection of the tool from dirt and impact
- Width x height x depth: without tools 172 x 30 x 392 mm, with tools 172 x 38 x 392 mm

Durable foam insert; two-coloured for quick identification of missing parts; suitable for the Tool Rebel roller cabinet; equipped with 1 KNIPEX snipe nose cutting pliers (stork beak pliers), 1 KNIPEX mechanics' pliers as well as 1 KNIPEX electricians' shears.

Web link

<https://www.wera.de/en/05150181001>

Wera - 9781

05150181001 - 4013288225177

Wera Werkzeuge GmbH

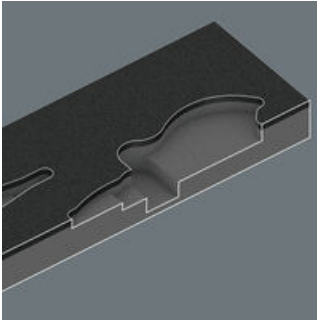
Korzter Straße 21-25

D-42349 Wuppertal

Tel: +49 (0)2 02 / 40 45-0

E-Mail: info@wera.de

Safe storage and quick overview



The tools sit securely in the foam thanks to precise contour cutouts, but are easy to remove. The carefully designed arrangement of the tools ensures space-saving storage and quick access to each tool.

Two-coloured foam insert



After removing the tool the light grey second foam becomes visible and therefore missing tools are quickly identified.

Web link

<https://www.wera.de/en/05150181001>

Wera - 9781

05150181001 - 4013288225177

Wera Werkzeuge GmbH

Korzter Straße 21-25

D-42349 Wuppertal

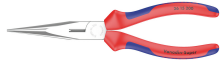
Tel: +49 (0)2 02 / 40 45-0

E-Mail: info@wera.de

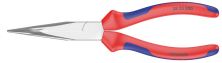
9781 Foam insert KNIPEX pliers set 2, 3 pieces

Set contents:

KNIPEX Snipe Nose Cutting Pliers (Stork Beak Pliers) 26 15 200, 200 mm
1x 200 mm



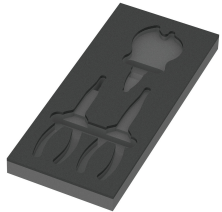
KNIPEX Mechanics' Pliers 38 25 200, 200 mm
1x 200 mm



KNIPEX Electricians' Shears 95 05 155, 155 mm
1x 155 mm



9881 Foam insert KNIPEX pliers set 2, empty, 172 x 30 x 392 mm
05137381001¹⁾ 1x 172 x 30 x 392 mm



1) Attention: The foam insert does not fit in the previous model 05501051001 of the roller cabinet.

Web link
<https://www.wera.de/en/05150181001>

Wera - 9781
05150181001 - 4013288225177

Wera Werkzeuge GmbH
Korzter Straße 21-25
D-42349 Wuppertal
Tel: +49 (0)2 02 / 40 45-0
E-Mail: info@wera.de