



<b>EAN:</b>	4013288232489	<b>Size:</b>	405x185x55 mm
<b>Part number:</b>	05150184001	<b>Weight:</b>	1255 g
<b>Article number:</b>	9784	<b>Country of origin:</b>	DE (05)
		<b>Customs tariff number:</b>	82032000

- Durable foam insert, each tool has its own place; two-coloured, missing tools will quickly be noticed
- Optimum fit for the best possible removal of the tools from the foam insert
- Water- and oil-repellent, low maintenance and easy to clean
- Protection of the tool from dirt and impact
- Width x height x depth: without tools 172 x 30 x 392 mm, with tools 172 x 38 x 392 mm

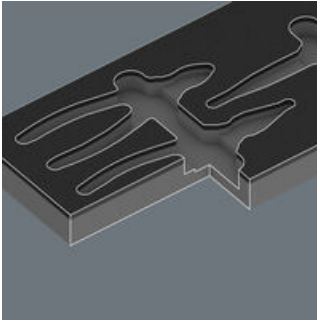
Durable foam insert; two-coloured for quick identification of missing parts; suitable for the Tool Rebel roller cabinet; equipped with 1x KNIPEX high leverage diagonal cutter, 1x KNIPEX snipe nose side cutting pliers (stork beak pliers), 1x KNIPEX needle-nose combination pliers; each insulated with multi-component sleeves, VDE-tested.

**Web link**  
<https://www.wera.de/en/05150184001>

Wera - 9784  
05150184001 - 4013288232489

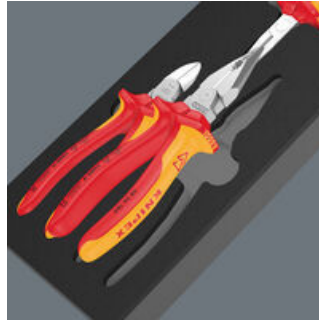
Wera Werkzeuge GmbH  
Korzter Straße 21-25  
D-42349 Wuppertal  
Tel: +49 (0)2 02 / 40 45-0  
E-Mail: [info@wera.de](mailto:info@wera.de)

**Safe storage and quick overview**



The tools sit securely in the foam thanks to precise contour cutouts, but are easy to remove. The carefully designed arrangement of the tools ensures space-saving storage and quick access to each tool.

**Two-coloured foam insert**



After removing the tool the light grey second foam becomes visible and therefore missing tools are quickly identified.

**Web link**  
<https://www.wera.de/en/05150184001>

Wera - 9784  
05150184001 - 4013288232489

Set contents:

**KNIPEX Diagonal stripper 70 06 160**

1x KNIPEX Diagonal stripper 70 06 160



**KNIPEX Snipe nose pliers with blade (stork beak pliers) 26 16 200**

1x KNIPEX Snipe nose pliers with blade (stork beak pliers) 26 16 200



**KNIPEX Needle-nose combination pliers 08 26 185**

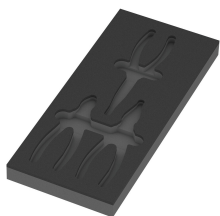
1x KNIPEX Needle-nose combination pliers 08 26 185



**9884 Foam insert KNIPEX pliers set VDE 1, empty, 172 x 30 x 392 mm**

05137384001<sup>1)</sup> 1x 172 x 30 x 392 mm

1) Attention: The foam insert does not fit in the previous model 05501051001 of the roller cabinet.



Attention: The foam insert does not fit in the previous model 05501051001 of the roller cabinet.

**Web link**

<https://www.wera.de/en/05150184001>

Wera - 9784

05150184001 - 4013288232489

Wera Werkzeuge GmbH

Korzter Straße 21-25

D-42349 Wuppertal

Tel: +49 (0)2 02 / 40 45-0

E-Mail: [info@wera.de](mailto:info@wera.de)