

## NetKey<sup>®</sup> Category 6A, 6 and 5e Jack Modules

- Meet all industry performance standards for Category 6A, 6 and 5e
- Punchdown jack modules are 100% performance tested and individually serialized for future traceability
- Keystone punchdown jacks meet ANSI/TIA 568-C.2 and ISO 11801 component requirements
- Snap in and out of keystone openings for easy moves, adds and changes
- Universal label includes T568A and T568B wiring schemes



**NK6X88MIW  
NK688MIW  
NKP5E88MIW**

Part Number	Description	Color	Std. Pkg. Qty.	Std. Ctn. Qty.
-------------	-------------	-------	----------------	----------------

### NetKey<sup>®</sup> Category 6A UTP Jack Modules\*

<b>NK6X88MIW</b>	Category 6A, component compliant, 8-position, 8-wire keystone punchdown jack module.	Off White	1	50
<b>NK6X88MIW-Q</b>	Convenience pack of 25, Category 6A, component compliant, 8-position, 8-wire keystone punchdown jack modules.	Off White	25	250

### NetKey<sup>®</sup> Category 6 UTP Jack Modules

<b>NK688MIW</b>	Category 6, component compliant, 8-position, 8-wire, keystone punchdown jack module.	Off White	1	50
<b>NK688MIW-Q</b>	Convenience pack of 25, Category 6, component compliant, 8-position, 8-wire, keystone punchdown jack modules.	Off White	25	250

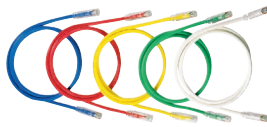
### NetKey<sup>®</sup> Category 5e UTP Jack Modules\*

<b>NKP5E88MIW</b>	Category 5e, component compliant, 8-position, 8-wire, keystone punchdown jack module.	Off White	1	50
<b>NKP5E88MIW-Q</b>	Convenience pack of 25, Category 5e, component compliant, 8-position, 8-wire, keystone punchdown jack modules.	Off White	25	250

\*For standard colors other than IW (Off White), replace IW in part number with EI (Electric Ivory), IG (International Gray), WH (White), BL (Black), BU (Blue), RD (Red), YL (Yellow), GR (Green), OR (Orange) or VL (Violet).

## NetKey<sup>®</sup> Copper UTP Patch Cords

- Meet all industry performance standards for Category 6A, 6 and 5e
- 100% performance tested
- Available in a variety of colors and lengths for design flexibility



**NK6APC<sup>^\*</sup>  
NK6PC<sup>^\*Y</sup>**



**NK5EPC<sup>^\*Y</sup>**

Part Number	Description	Std. Pkg. Qty.	Std. Ctn. Qty.
-------------	-------------	----------------	----------------

### Category 6A UTP Patch Cord

<b>NK6APC<sup>^*</sup></b>	Category 6A, UTP patch cord with modular plugs on each end.	1	10
----------------------------	---	---	----

### Category 6 UTP Patch Cord

<b>NK6PC<sup>^*Y</sup></b>	Category 6, UTP patch cord with modular plugs on each end.	1	10
----------------------------	--	---	----

### Category 5e UTP Patch Cord

<b>NK5EPC<sup>^*Y</sup></b>	Category 5e, UTP patch cord with modular plugs on each end.	1	10
-----------------------------	---	---	----

<sup>^</sup>Available in 3, 5, 7, 10, 14 and 20-foot lengths.

\*For standard colors other than Off White, add suffix BU (Blue), RD (Red), YL (Yellow) or GR (Green) before Y in the part number. For example, the part number of a blue, Category 6, 5-foot patch cord is NK6PC5BUY.