



**WORLDWIDE ELECTRIC MOTOR DATA SHEET**

**PEWWE25-18-284T**



HORSEPOWER	25		
RPM / POLES	1800 / 4		
VOLTAGE / PHASE	230 / 460 V / 3		
FRAME	284T		
ENCLOSURE / DEGREE OF PROTECTION	TEFC / IP55		
FREQUENCY	60 HZ Suitable For 50 HZ Operation With 1.0 SF		
FULL LOAD SPEED	1770 RPM		
SERVICE FACTOR	1.25		
INSULATION CLASS	F		
FULL LOAD AMPS; 230 / 460	58.2 / 29.1 A (Usable On 208V At 64.4 A)		
LOCKED ROTOR AMPS (STARTING); 230 / 460	365 / 182.5 A		
NO LOAD CURRENT	21.2 / 10.6 A		
NEMA CODE LETTER	G		
EFFICIENCY / POWER FACTOR	<u>LOAD</u>	<u>EFF.</u>	<u>P.F.</u>
	100 %	93.6%	0.86
	75 %	93.9%	0.82
	50 %	93.6%	0.73
DUTY CYCLE	S1 / Continuous		
TORQUE	<u>FULL LOAD</u>	<u>LRT</u>	<u>BDT</u>
	74.2 lb.ft.	150%	240%
SLIP	1.67 %		
NEMA DESIGN	B		
MOMENT OF INERTIA	3.36 lb.ft. <sup>2</sup>		
MAX. TIME LOCKED ROTOR (Hot)	16 Seconds		
SOUND PRESSURE LEVEL	70 dB (A)		
MAX. AMBIENT TEMPERATURE	40° C		
MAX. ELEVATION	3300 Ft.		
TEMPERATURE RISE (At Full Load)	80° C		
DE BEARING	6311 C3		
ODE BEARING	6309 C3		
REGREASING INT. - DE BEARING	4000 Hours		
REGREASING INT. - ODE BEARING	5000 Hours		
GREASE TYPE	SKF LGHP 2		
MOUNTING	F1		
ROTATION	Bi-Directional		
SHAFT MATERIAL	1045 Carbon Steel		
INVERTER RATING	10:1 CT / 20:1 VT PWM Type		
CONNECTION DIAGRAM	230 / 460 V - 12 Lead Δ		
AREA CLASSIFICATION	Class I, Division 2, Groups A, B, C, D		
APPROXIMATE WEIGHT	385 lbs.		



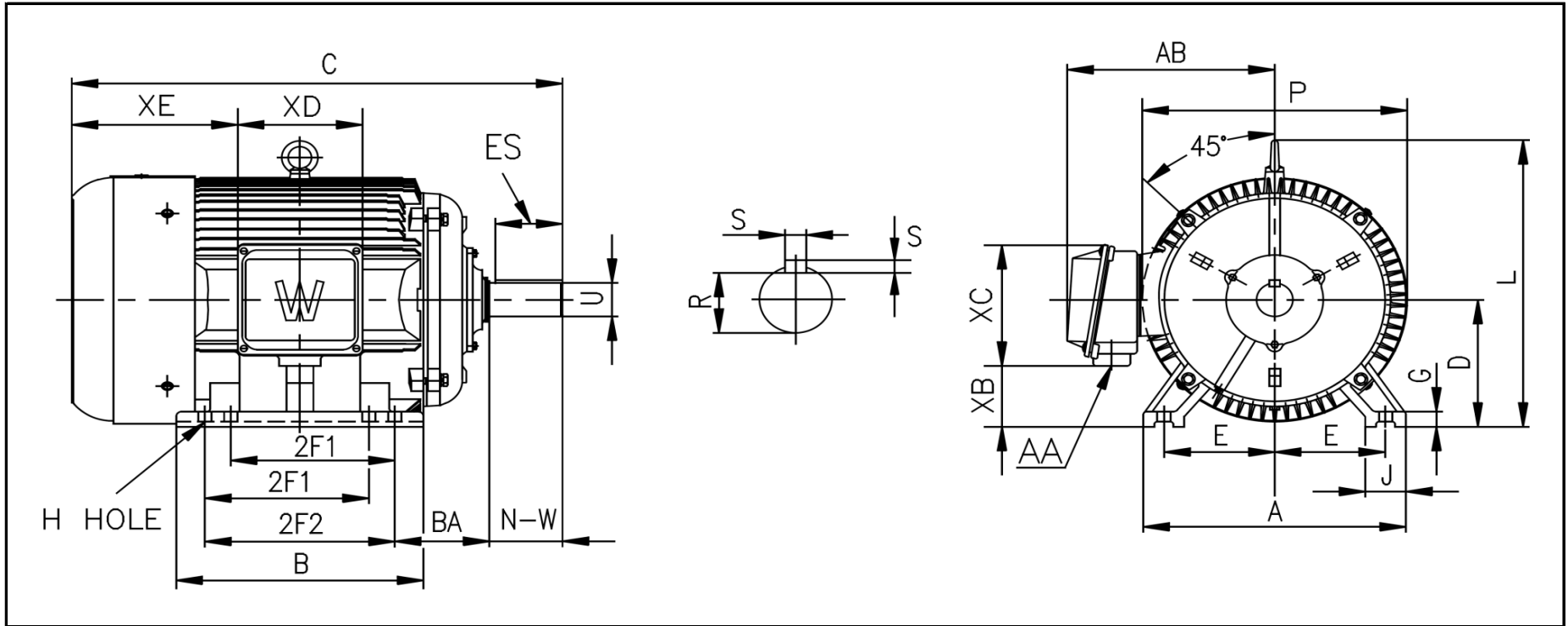
**CC006A**





# WORLDWIDE ELECTRIC MOTOR DRAWING

## PEWWE-284T



**DIMENSIONS - INCHES**

MOUNTING					A	B	C	D	G	J	P	L	AB
E	2F1	2F2	H	BA									
5.5	-	9.5	0.53	4.75	14	12.4	26.6	7	0.87	2.8	14	14.3	11.5

KEY		KEYSET	SHAFT		TERMINAL BOX				
S	ES	R	N-W	U	AA	XB	XC	XD	XE
0.5	3.28	1.591	4.62	1.875	1.5	3.6	7.4	6.3	9.25