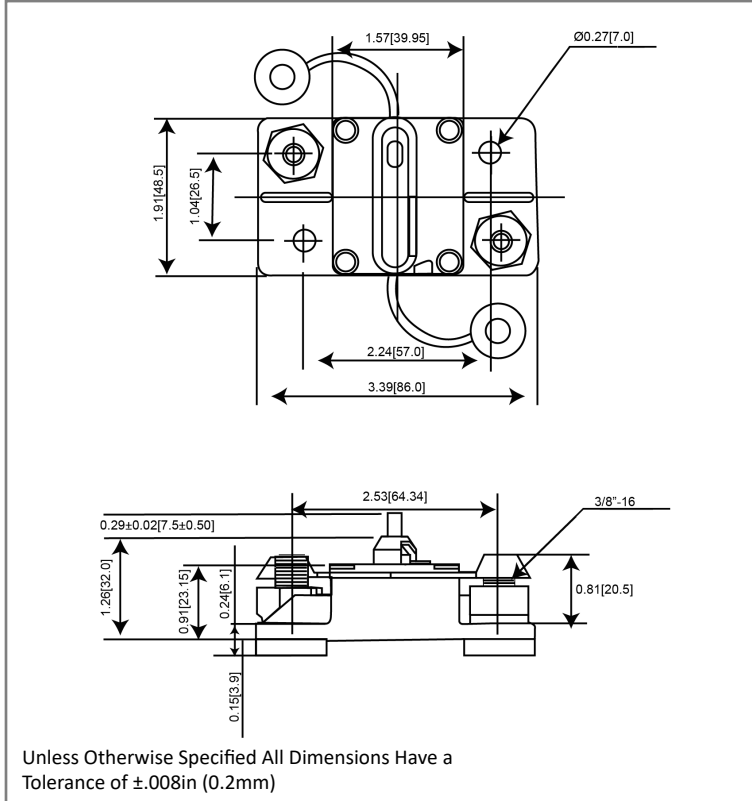
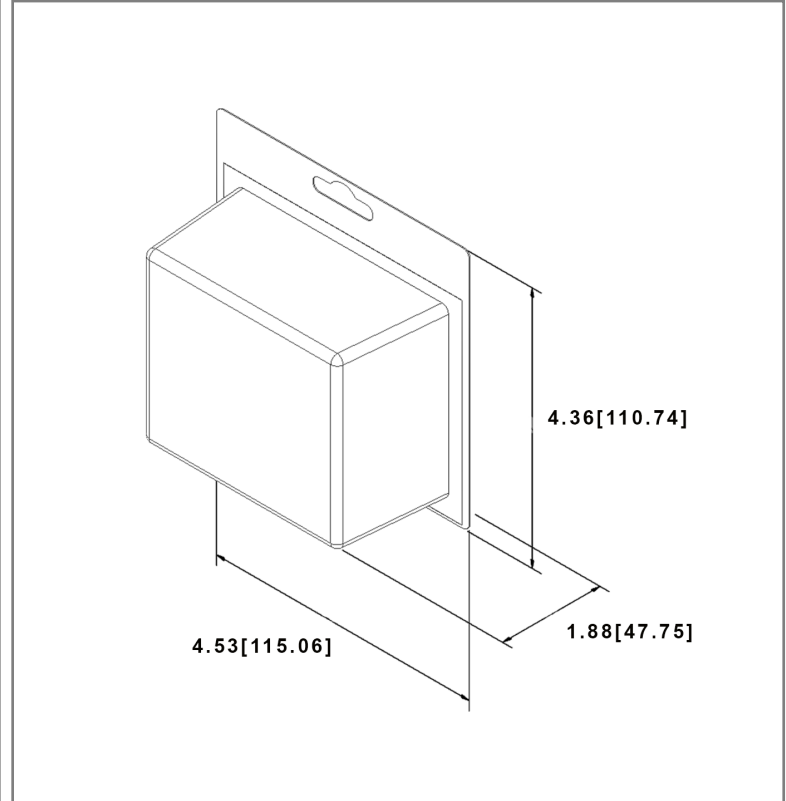


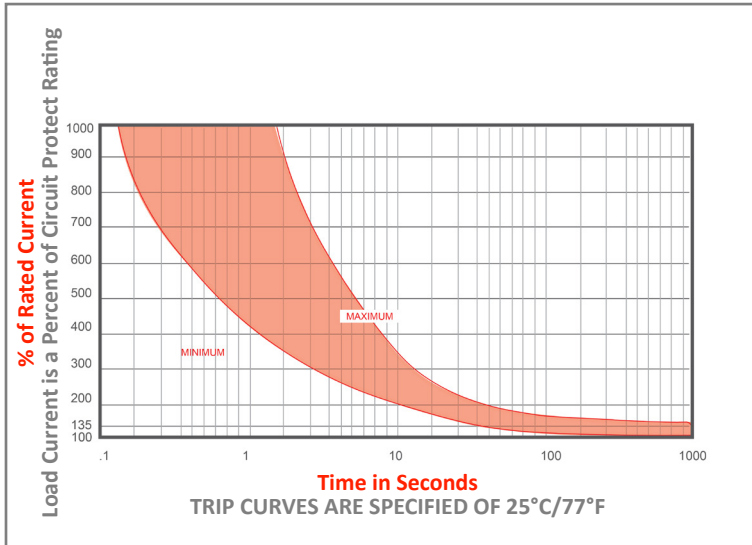
Mechanical Dimensions: Inches [mm]



Retail Pack: Inches [mm]



Time vs. Percent of Rated Current



| % of Rated Current | Min Hold Time | Max Hold Time |
|--------------------|------------------------------|---------------|
| 100% | No Trip (≥ 30 Minutes) | |
| 135% | 50s | 30m |
| 200% | 12s | 45s |
| 300% | 3.5s | 15s |

Trip time: Ambient temperature 25°C \pm 3°C

*Trip time information is only for models up to 200A. For information regarding 250A and 300A models please contact the factory.

Electrical Specifications

| | |
|------------------------------|--|
| Voltage Rating | 42VDC; 48VDC |
| Reset Type | Type III - Manual Reset |
| Interrupting Rating | 3000A @ 30VDC (ABYC E-11); 1500A @ 48VDC; 3000A @ 44VDC |
| Operation Temperature | -25 °F ~ 180 °F -32 °C ~ 82 °C |
| Testing | SAE J553, ABYC-E11 |

Material Specifications

| | |
|--|-----------------------------|
| Heavy Duty High Amp - Waterproof Circuit Breaker | |
| Body Material | Thermoset Plastic (UL94V-0) |
| Terminals Material | Nickel Plated |
| Terminals Configuration | 3/8"-16 Stud |
| Mounting Type | Surface Mount |
| Studs Torque | 30.5 N.m max. |
| Mounting Torque | ~24 N-m MAX |
| Ignition Protected | SAE J1171 |
| Ingress Protection | IP67 |

Part Numbers Information

| Amperage | Bulk Part # | Retail Pack # Blister Card | Pack Size |
|----------|-------------|-------------------------------|-----------|
| 25A | 353025 | 353025-BP | 1 |
| 30A | 353030 | 353030-BP | 1 |
| 40A | 353040 | 353040-BP | 1 |
| 50A | 353050 | 353050-BP | 1 |
| 60A | 353060 | 353060-BP | 1 |
| 70A | 353070 | 353070-BP | 1 |
| 80A | 353080 | 353080-BP | 1 |
| 90A | 353090 | 353090-BP | 1 |
| 100A | 353100 | 353100-BP | 1 |
| 120A | 353120 | 353120-BP | 1 |
| 135A | 353135 | 353135-BP | 1 |
| 140A | 353140 | 353140-BP | 1 |
| 150A | 353150 | 353150-BP | 1 |
| 180A | 353180 | 353180-BP | 1 |
| 200A | 353200 | 353200-BP | 1 |
| 250A | 353250 | 353250-BP | 1 |
| 300A | 353300 | 353300-BP | 1 |

| Rev | Date of issue | Revision Notes | Designed | Approved |
|-----|---------------|---|----------|----------|
| H | 10-14-2025 | Updated Voltage Rating, Updated Interrupting Rating | RC | OF |