

## The Ranger series – Liquidtight strain-relief fittings

The fitting that takes a 0.250 inch cable range.

New materials and computer aided designs helped ABB develop a strain relief fitting that will take twice the cable range of ordinary strain-relief fittings.

### Application

- A liquidtight fitting to secure flexible cord or power cable to a box or enclosure and provide strain relief.

### Features

- Extended range with superior strain relief
- Reduced overall size, fits into tighter spaces
- Gland nut designed to restrict cable bending

### Range

	Series	Hub size (in.)
0.125 in. through 0.950 in.	2920S	½–1
	4920	½–1
	4960	½–1
	2920AL	½–1
	4960AL	½–1
0.125 in. through 0.750 in.	2920NM	½–1
	4960NM	½–¾

### Standard material/finish

	2920S Series 4920 Series 4960 Series	2920NM Series 4960NM Series	2920AL Series 4960AL Series
Body	Steel (ST) 45° and 90° (malleable iron)	Nylon (weather stabilized)	Aluminum (ST) Malleable iron (90°)
Gland	Steel	Nylon (weather stabilized)	Aluminum
Grip	Plastic	Nylon (weather stabilized)	Aluminum
Bushing	Santoprene	Oil-resistant elastomer	Aluminum

### Liquidtight strain-relief fittings – Straight



Cat. no.	Hub size (in.)	Throat dia.	Cord range min.-max. (in.)	Dimensions (in.)		
				A	B	C
2920S	½	9/16	0.125–0.375	1 1/8	1 3/4	5/8
2921S	½	9/16	0.310–0.560	1 1/8	1 3/4	5/8
2922S*	½	9/16	0.500–0.750	1 3/8	1 3/4	5/8
2930S	¾	1 3/16	0.125–0.375	1 3/8	1 25/32	¾
2931S	¾	1 3/16	0.310–0.560	1 3/8	1 25/32	¾
2932S	¾	1 3/16	0.500–0.750	1 3/8	1 25/32	¾
2940S	1	1 1/16	0.310–0.560	1 3/8	1 ¾	1 3/16
2941S	1	1 1/16	0.500–0.750	1 3/8	1 ¾	1 3/16
2942S	1	1 1/8	0.700–0.950	1 3/8	1 7/8	1 3/16

\*It may be necessary to remove sufficient outer covering of cable to permit conductors to pass through the fitting body

### Liquidtight strain relief fittings



Cat. no.	Hub size (in.)	Throat dia. (in.)	Cord range min.-max. (in.)	Dimensions (in.)		
				A	B	C
2920	½	9/16	0.125–0.375	1 1/8	1 3/4	5/8
2921	½	9/16	0.310–0.560	1 1/8	1 3/4	5/8
2922*	½	9/16	0.500–0.750	1 3/8	1 3/4	5/8
2930	¾	1 3/16	0.125–0.375	1 3/8	1 25/32	¾
2931	¾	1 3/16	0.310–0.560	1 3/8	1 25/32	¾
2932	¾	1 3/16	0.500–0.750	1 3/8	1 25/32	¾
2940	1	1 1/16	0.310–0.560	1 3/8	1 ¾	1 3/16
2941	1	1 1/16	0.500–0.750	1 3/8	1 ¾	1 3/16
2942	1	1 1/8	0.700–0.950	1 3/8	1 7/8	1 3/16

\*It may be necessary to remove sufficient outer covering of cable to permit conductors to pass through the fitting body

## The Ranger series – Stainless steel liquidtight cord fittings

—  
01 Pharmaceutical processing, food processing, pulp and paper mills, wastewater treatment, saltwater and petrochemical refining applications



—  
01

02 Beveled rubber bushing ensures superior compression and sealing



—  
02



Also available in other materials to meet all your cord-fitting needs.



—  
2920 Series steel/malleable iron in straight, 45° and 90°



—  
2920AL Series aluminum in straight and 90°



—  
2920NM Series nonmetallic in straight and 90°

### Type 304 stainless steel construction for harsh environments.

Until now, there has been no ideal solution for liquidtight connections of portable cord to a box or enclosure in corrosive environments. Steel fittings rust and nonmetallic fittings cannot withstand high temperatures or ultraviolet exposure.

In response to customer demand, ABB has developed the latest addition to its high-performance line of Ranger cord fittings. Made of type 304 stainless steel, Ranger stainless steel liquidtight cord fittings stand up to highly corrosive environments – such as washdown areas in food and beverage or pharmaceutical processing – as well as high temperatures and UV exposure.

Like all Ranger liquidtight cord fittings, the stainless steel fittings offer twice the cord diameter range of similar fittings, so you can do more with fewer sizes to order and stock. They form a non-slip mechanical grip, providing a liquidtight seal and the strain relief required for flexible portable cord connections.

- Each fitting covers a 0.25 in. cord diameter range – twice that of ordinary strain relief fittings
- Superior corrosion resistance in washdown areas and other corrosive environments
- Stands up to heat and UV exposure better than nonmetallic fittings
- Beveled, moisture- and oil-resistant synthetic rubber bushing system ensures superior compression and sealing of fitting to cord
- Bushing marked with cord range for easy identification out of the box

### Ranger stainless steel cord fittings – ¼ in.–¾ in. hub sizes



Cat. no.	Hub size (in.)	Cord dia. range (in.)	Dimensions (in.)		
			A	B	C
2918SST	¼	0.118–0.256	1.000	0.250	0.625
2919SST	⅜	0.157–0.315	1.313	0.438	0.750

### Ranger stainless steel cord fittings – ½ in.–1 in. hub sizes



Cat. no.	Hub size (in.)	Cord dia. range (in.)	Dimensions (in.)		
			A	B	C
2920SST	½	0.125–0.375	1.935	0.610	1.125
2921SST	½	0.310–0.560	1.935	0.610	1.125
2922SST*	½	0.500–0.750	2.003	0.610	1.125
2930SST	¾	0.125–0.375	2.063	0.630	1.125
2931SST	¾	0.310–0.560	2.063	0.630	1.125
2932SST	¾	0.500–0.750	2.063	0.630	1.125
2940SST	1	0.310–0.560	2.178	0.785	1.500
2941SST	1	0.500–0.750	2.218	0.785	1.500
2942SST	1	0.700–0.950	2.218	0.785	1.500

\*It may be necessary to remove sufficient outer covering of cable to permit conductors to pass through the fitting body

## The Ranger series – Aluminum fittings



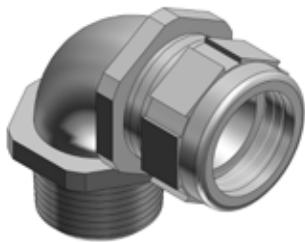
Body and gland nut are aluminum.

### Aluminum liquidtight strain-relief fittings – Straight



Diagram	Cat. no.	Hub size (in.)	Throat dia. (in.)	Cord range (in.)	Dimensions (in.)		
					A	B	C
	2920AL	1/2	9/16	0.125–0.375	1 1/8	1 3/4	5/8
	2921AL	1/2	9/16	0.310–0.560	1 1/8	1 3/4	5/8
	2922AL*	1/2	9/16	0.500–0.750	1 5/16	1 3/4	5/8
	2930AL	3/4	13/16	0.125–0.375	1 5/16	1 25/32	3/8
	2931AL	3/4	13/16	0.310–0.560	1 5/16	1 25/32	3/4
	2932AL	3/4	13/16	0.500–0.750	1 5/16	1 25/32	3/4
	2940AL	1	1 1/16	0.310–0.560	1 5/16	1 3/4	1 1/16
	2941AL	1	1 1/16	0.500–0.750	1 5/16	1 3/4	1 1/16
	2942AL	1	3 1/32	0.700–0.950	1 9/16	1 7/8	3 1/32

\* It may be necessary to remove sufficient outer covering of cable to permit conductors to pass through fitting body



Body and gland nut are aluminum.

### Aluminum liquidtight strain-relief fittings – 90° elbow



Diagram	Cat. no.	Trade or hub size (in.)	Throat diam. (in.)	Cord range (in.)	Dimensions (in.)			
					A	B	C	D
	4960AL	1/2	9/16	0.125–0.375	1 1/8	1 3/4	5/8	1 5/16
	4961AL	1/2	9/16	0.360–0.560	1 1/8	1 3/4	5/8	1 5/16
	4970AL	3/4	25/32	0.125–0.375	1 5/16	1 25/32	1 1/16	1 15/32
	4971AL	3/4	25/32	0.310–0.560	1 5/16	1 25/32	1 1/16	1 15/32
	4972AL	3/4	25/32	0.500–0.750	1 5/16	1 25/32	1 1/16	1 15/32
	4980AL	1	1 5/16	0.310–0.560	1 5/16	2 1/32	1 3/16	1 3/4
	4981AL	1	1 5/16	0.500–0.750	1 5/16	2 1/32	1 3/16	1 3/4
	4982AL	1	1 5/16	0.700–0.950	1 5/16	2 11/16	1 3/16	2