

## TYPE GTC

### Features

- Snap closure
- Color coded
- UL Listed and CSA Certified for 600 volts, 90° C except for GTPC-750-750 and GTTC-750-750

### Benefits

- Installs quickly and saves labor time by eliminating taping
- Provides ease of identification in the field
- Ensures reliability

C



Fig. 1



Fig. 2



Fig. 3

Catalog Number	Figure Number	Color	Dimensions			Used with Connector
			L	W	H	
GTC-2	1	Black	2-1/4	1-13/16	1-1/4	GTA-2-2: GTT-2-2
GTC-0	1	Black	2-1/2	2-3/32	1-3/8	GTA-0-0: GTT-0-0
GTC-250-350	1	Black	3-61/64	3-1/32	2	GTA-250-0: GTA-250-250 GTA-350-350 GTT-250-0: GTT-250-250 GTT-350-350
GTC-500	1	Black	4-1/8	3-1/16	2-31/32	GTA-500-500 GTT-500-500
GTC-750-500	1	Black	4-7/8	3-1/8	2-23/32	GTA-750-500 GTT-750-500
GTPC-750-750*	2	Black	4-7/8	4	2-7/8	GTA-750-750
GTTC-750-750*	3	Black	5-3/4	4-1/4	3-1/16	GTT-750-750

All wire sizes, unless noted otherwise, are American Wire Gauge (AWG)

\* Not UL Listed or CSA Certified

Tested to UL 486A/B, UL File E6207

### TYPE GT4T

#### Features

- Manufactured from high strength 6061-T6 aluminum alloy
- Electro-tin plated
- UL Listed and CSA Certified for 600 volts, 90° C
- Compact design
- Range taking
- Re-usable
- Lay-in main conductor
- Insulating cover available

#### Benefits

- Suitable for use with either copper or aluminum conductors
- Provides low contact resistance
- Ensures reliability for copper or aluminum conductors
- Can make up to four taps off a single main which saves space and reduces installation time
- Permits inventories to be kept to a minimum
- Provides efficient use and flexibility in the field
- No need to break the feeder cable
- Eliminates taping

C

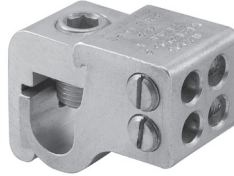
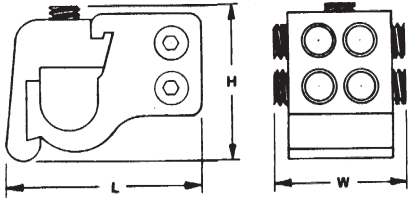


Fig. 1



Fig. 2

Catalog Number	Figure Number	Wire Range		No. of Taps	Dimensions			Hex Size	
		Main	Tap		L	W	H	Main	Tap
GT4T-250-2-1*	1	250kcmil-1/0	2-12 AL, 2-14 CU	4	2-3/16	1-1/8	1-35/64	5/16	Slot
GT4T-250-2-2*	2	250kcmil-1/0	2-12 AL, 2-14 CU	4	2-3/16	1-1/8	1-35/64	5/16	Slot
GT4T-350-2-1†	1	350kcmil-4/0	2-12 AL, 2-14 CU	4	2-17/32	1-1/8	1-17/32	3/8	Slot
GT4T-350-2-2*	2	350kcmil-4/0	2-12 AL, 2-14 CU	4	2-17/32	1-1/8	1-17/32	3/8	Slot
GT4T-500-2-1†	1	500kcmil-350kcmil	2-12 AL, 2-14 CU	4	2-31/32	1-1/4	1-11/16	3/8	Slot
GT4T-500-2-2†	2	500kcmil-350kcmil	2-12 AL, 2-14 CU	4	2-31/32	1-1/4	1-11/16	3/8	Slot
GT4T-500-0-1†	1	500kcmil-350kcmil	1/0-12 AL, 1/0-14 CU	4	2-31/32	1-1/4	1-11/16	3/8	Slot
GT4T-500-0-2†	2	500kcmil-350kcmil	1/0-12 AL, 1/0-14 CU	4	2-31/32	1-1/4	1-11/16	3/8	Slot

All wire sizes, unless noted otherwise, are American Wire Gauge (AWG)

\* GTC-250-350 Cover can be used. See page 165.

† GTC-500 Cover can be used. See page 165.

DE-OX Inhibitor is recommended for all aluminum terminations.

Tested to UL 486A/B, UL File E6207