

FILTA

SMART LOCK

INSTRUCTION MANUAL

Model : D6

Powered by



Note:

1. This lock is equipped with mechanical keys for manual unlocking. Remove mechanical keys from the package and keep them in a safe place and always have access to them.
2. To power on the lock, 4 x AAA Alkaline batteries (not included) are required.
3. This lock is used outdoors and indoors. The waterproof rating: IP63.
4. Keep your fingers clean when using this lock.

Please read this manual before operating the smart lock, and keep it for further reference.

Contents

I -Parameter	01
II-Attention	02
III-Overview	03
IV-Installation	04
V -Tuya-App Settings	
Install Tuya APP	06
Create Family	07
Add Device	08
Add Fingerprint /Add Password	09
Add Card	10
VI-Personalization	
Temporary Password/Silent Mode	11
Normal Open Mode/Remove Device	12
VII-Offline Mode	13
Add administrator Add user	
Delete user Switch voice mode	
Switch language Restore factory settings	
VIII-FAQ	14

Unlocking Way	Key+Fingerprint+Password +Card+Tuya APP
Material	Aluminum Alloy+Acrylic
Available Thickness	30mm~50mm
Dimensions	Round Cover -- D70mm Square Cover -- D65mm Lever -- L150mm Height --H62mm
Capacity	Fingerprint & Card -- 50 sets Password -- 100 sets
Audio	English&Chinese
Power Supply	4xAAA Alkaline Batterys
Backup Power Interface	USB-C
Working Voltage	6V
Alarm Voltage	4.8V

1 Do not use the key to unlock the device until the installation is complete. Because the drive shaft is not homed, turning the key can cause the drive shaft to be damaged.

PS: The key is the last resort to unlock, so please keep it safe.



2 The battery cover is designed with a magnetic structure. As shown in the figure, it can be easily opened by pressing the edge of the battery cover.



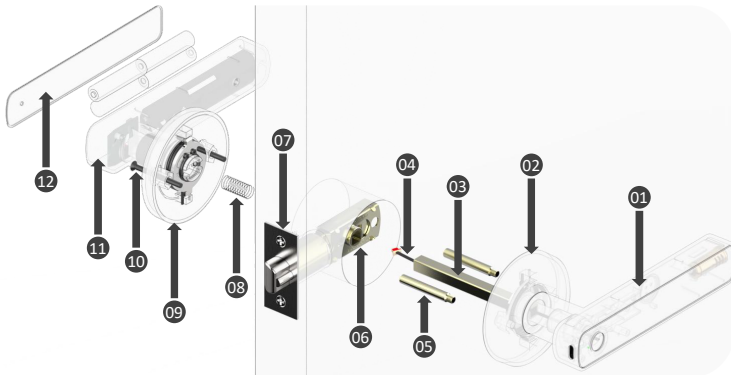
3 In the factory default state, any fingerprint can be unlocked; once a user is entered, only legitimate users can unlock it.

When recording a fingerprint, the fingerprint reader must be completely covered by the finger, otherwise the entry may fail.

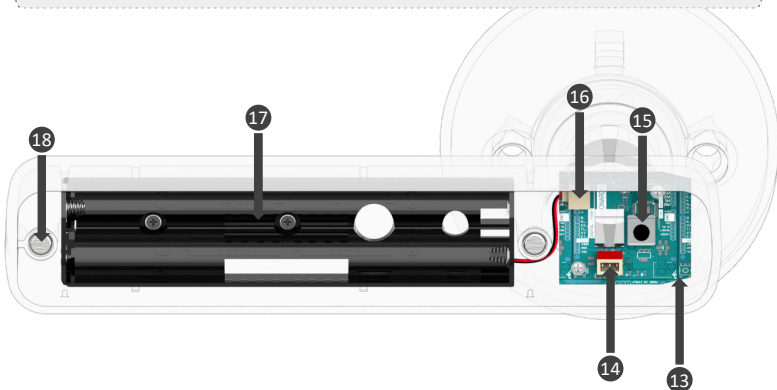


4 Unlocked mode Press and hold the settings button for 1 second and let go, and the device will switch to the "Unlocked Mode". In this state, the door can be opened by turning the handle without user verification. Press the button again to return to the locked state.





- | | | |
|----------------------------|-------------------------|---------------------------|
| 1 Front handle | 7 Striking plate | 13 Rear PCB |
| 2 Front cover | 8 Spring | 14 Cable interface |
| 3 Hollow square bar | 9 Rear cover | 15 Settings button |
| 4 Cable | 10 Screw | 16 Power interface |
| 5 Screw bolt | 11 Rear handle | 17 Battery box |
| 6 Latch bolt | 12 Battery cover | 18 Magnet |



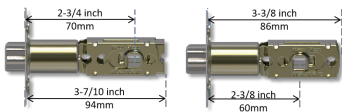
IV

Installation

- 1 Adjust the backset of the lock latch as needed, and then fix it to the door with 2 self-tapping screws.

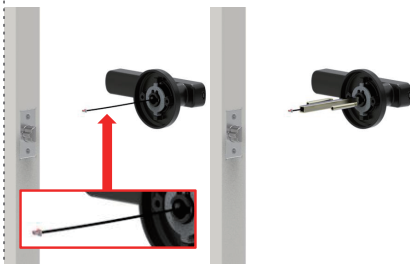


If the striking plate don't match your door grooves, you can change the door hole or use the old latch directly.



- 2 Pull out the cable and straighten it, thread the hollow square bar through the cable to the bottom of the front handle, and then attach the 2 screw bolts to the front cover.

Note: Please protect the cable form damage.



- 3 Inset the front handle into the door hole, making sure the screw bolts and hollow square bar pass through the latch bolt.

Attach the spring to the rear handle to prevent the hollow square bar and the drive shaft inside the front handle from disengage.

⚠ When the door is more than 1.5 inches (38mm) thick, a spring needs to be placed on the rear handle.



- 4 Thread the cable through the spring and rear handle, then secure the front and rear handles to the door with 2 screws.

Note: If the handle hangs down, it will affect the unlocking, and you can try to lift the handle up to unlock and adjust the handle to be level immediately.

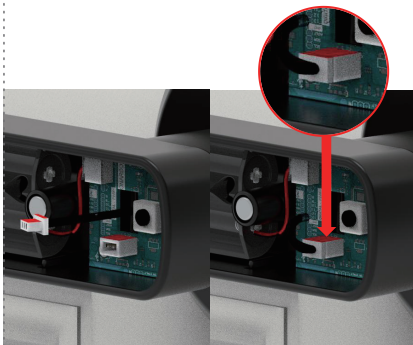


⚠ The front and rear handles should not hang down and should be level.

IV

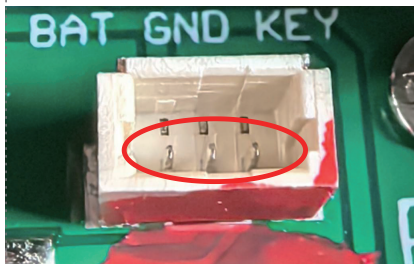
Installation

5 Connect the cable to the interface of the rear PCB according to the diagram, and make sure that the interface are connected according to the red mark, otherwise the pins inside the interface will be crooked.



6 If the pins are deformed, it will cause a short circuit in the product and cause malfunction. You can straighten the deformed pins with a screwdriver.

Note: If the product is faulty, please check the pins for deformation first.



7 Install the 4 AAA batteries, then close the battery cover.

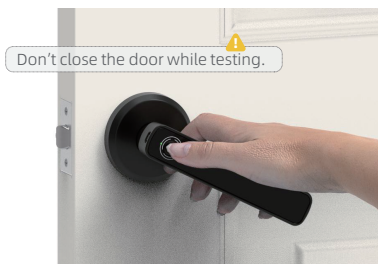
Note: Please use high-quality AAA alkaline batteries to avoid affecting the performance of the product.



8 Press the fingerprint reader and turn the handle to test unlocking.

If it can't be unlocked, please check:

- Whether the battery is working or not.
- Whether the handle is level.
- Whether the cable is connected or not.
- Whether the pins in the interface are deformed or not.



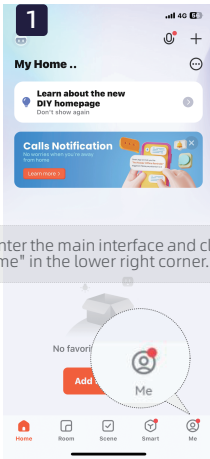
Install Tuya APP

Only the upgraded version is equipped with the mobile APP functionality. Users can download and install Tuya Smart from the app store. Moreover, users can also download and install the APP by scanning the QR code below.

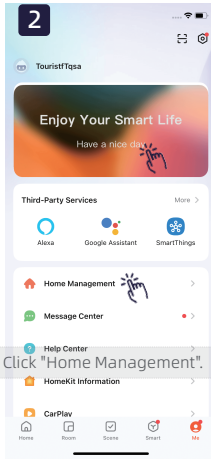
**Note:**

1. The way these two applications are used and operated is largely the same. However, their data is stored independently, ensuring that there's no crossover between them.
2. In this manual, we'll be using the "Tuya Smart" app for explanations. Once the installation is complete, please follow the on - screen prompts to register and log in.
3. The APP will be continuously optimized and updated. As a result, you might notice minor differences in its operation and interface design.

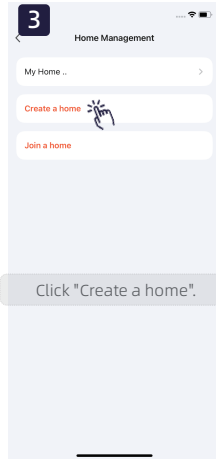
Create Family



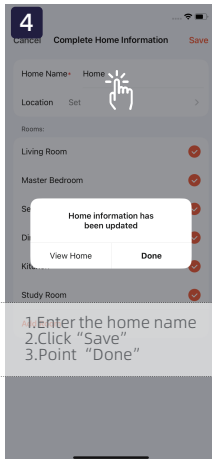
Enter the main interface and click "me" in the lower right corner.



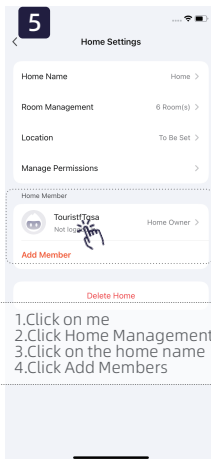
Click "Home Management".



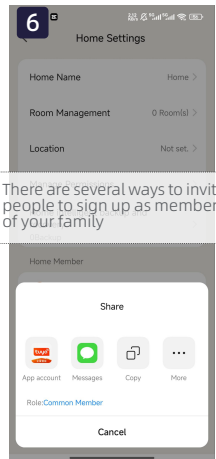
Click "Create a home".



1. Enter the home name
2. Click "Save"
3. Point "Done"



1. Click on me
2. Click Home Management
3. Click on the home name
4. Click Add Members



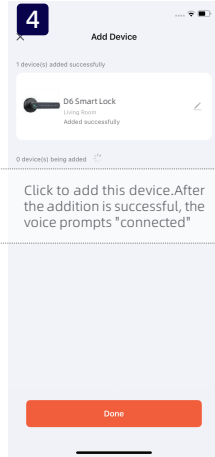
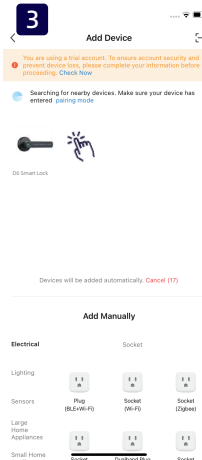
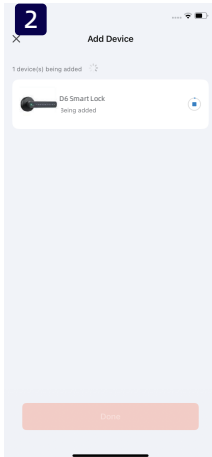
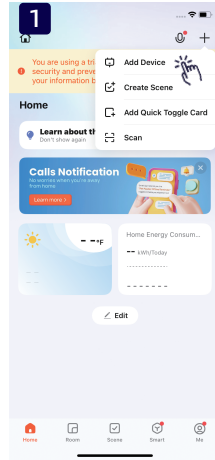
There are several ways to invite people to sign up as members of your family

Add Device

1. Tap the "+" symbol in the upper-right corner of the app. Next, select "Add Device". In the newly-opened interface, approve the request to enable Bluetooth and location services. These permissions are vital for the app to detect and pair with the device.

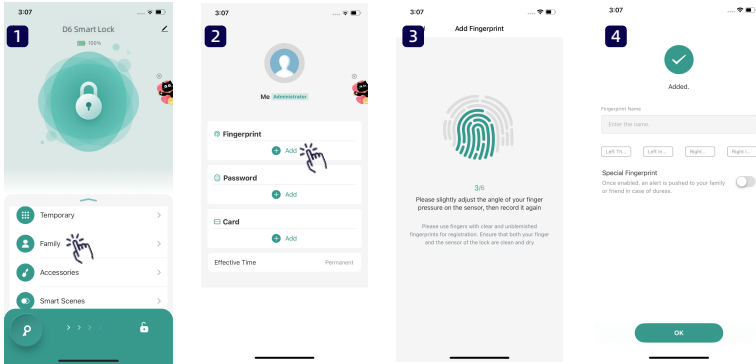
2. Once you've finished the above -mentioned settings, press the "#" key on your device to wake it up. Once the device is roused, an interface for device connection should automatically appear. On this interface, click on the device's icon to start the process of adding it.

Note: If the device isn't found, ensure Bluetooth & Location are on, then fully restart the app. Only one phone can be connected to a device at a time. To switch connections, first remove the device from the original phone or reset the device to factory settings.



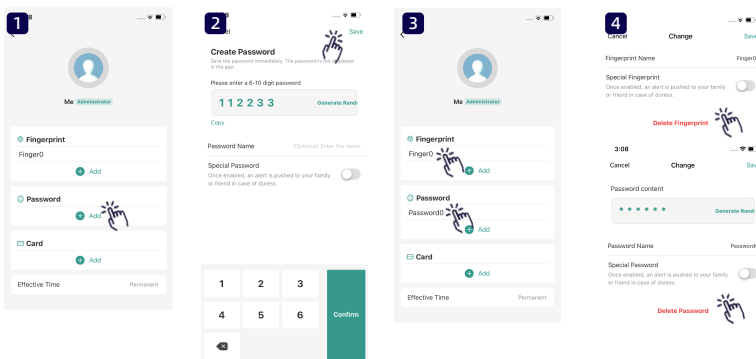
Add Fingerprint

1. Register fingerprint and password information within the family account.
2. When registering a fingerprint, you are required to press the fingerprint sensor 6 times. After the fingerprint is successfully entered, you can add a name note for identification.



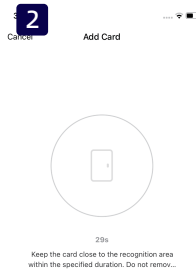
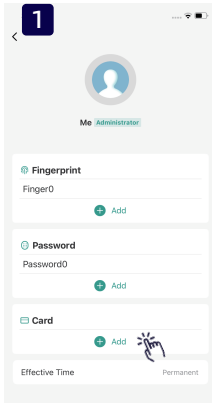
Add Password

3. The password can be either randomly generated or set as a fixed one. Make sure to copy it down or memorize the password for future use.

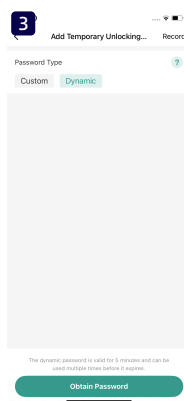
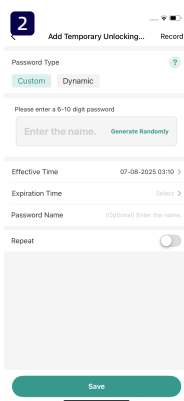
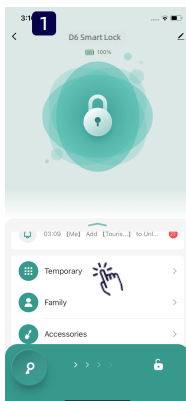


Add Card

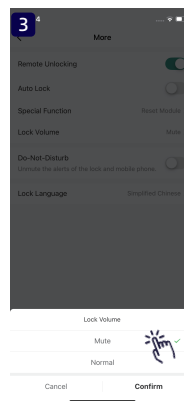
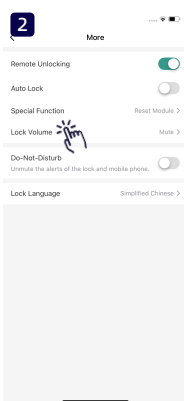
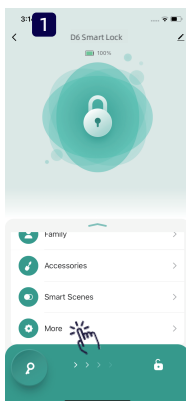
Use an NFC-enabled phone (iPhone is currently not supported) or the included IC card to enter information. After entering the information, please keep the IC card in a safe place.



Temporary Password



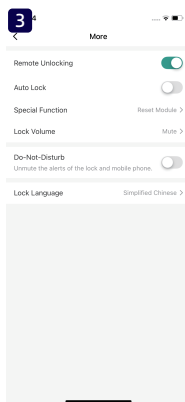
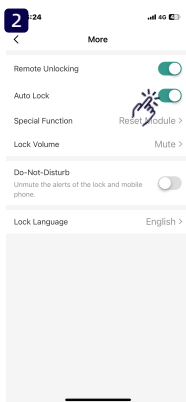
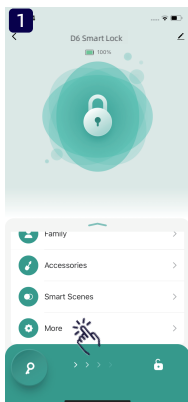
Silent Mode



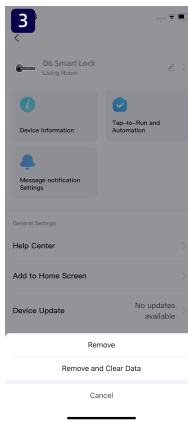
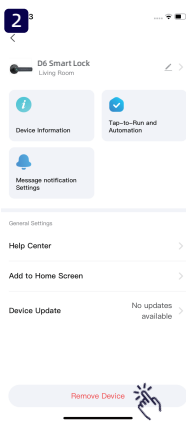
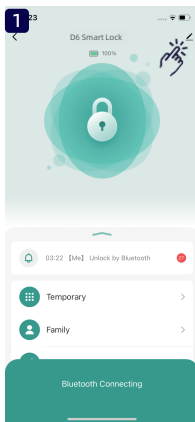
VI

Personalization

Always Open Mode



Remove Device



Add Administrator

- 1 Press ①+"#" +admin password+①
- 2 Enter the password and press '#' to confirm; Enter the same password again and press '#' to confirm.
- 3 • Enter the fingerprint 5 times.
 - The fingerprint reader must be completely covered by your finger, otherwise the entry maybe fail.
 - It is recommended to enter fingerprints from multiple angles to increase the recognition rate.
 - Fingerprints can be entered multiple times, but fingerprints that have been entered as administrators cannot be re-entered as ordinary user fingerprints, otherwise the administrator function will be lost.
- 4 • When the product has the card-reading function: (Some models do not have this function): Enter card once.
 - The card that has already been entered cannot be entered again.
 - In order to provide battery life, the device needs to be awakened before swiping the card.
- 5 The voice broadcasts "Enroll success". You can continue to add fingerprints or press "#" to return.

Add User

- 1 Press ①+"#" +admin password+②
- 2 Enter the password and press '#' to confirm; Enter the same password again and press '#' to confirm.
- 3 • Enter the fingerprint 5 times.
 - The fingerprint reader must be completely covered by your finger, otherwise the entry maybe fail.
 - It is recommended to enter fingerprints from multiple angles to increase the recognition rate. When the product has the card-reading function: (Some models do not have this function)
- 4 • Enter card once.
 - The card that has already been entered cannot be entered again.
- 5 • In order to provide battery life, the device needs to be awakened before swiping the card.
- 6 The voice broadcasts "Enroll success". You can continue to add fingerprints or press "#" to return.

Delete User

- 1 Press ①+"#" +admin password+③
- 2 Enter unwanted fingerprint or password+"#"
- 3 The voice broadcast "Delete success".
- 4 You can continue to delete or press "#" to return.

Switch Language

- 1 Press ①+admin password+⑤
- 2 The voice broadcast "chinese" or "English".

Switch Voice Mode

- 1 Press ①+"#" +admin password+④
- 2 The voice broadcast "Silent mode" or "Silent mode Cancel".

Restore Factory Settings

- 1 Press ①+"#" +admin password+⑥
- 2 Press "#" confirm.

Q: What should I do if the fingerprint scanner isn't responding well?

A: For better performance, try re-registering your fingerprint. You can store the same fingerprint multiple times to improve accuracy. Also, regularly clean the scanner—built-up dust or oil can reduce its sensitivity.

Q: How do I open the door if the battery dies?

A: Use the emergency power port (USB-C) to provide temporary power. Once unlocked, replace all four AAA batteries immediately to ensure continued operation.

Q: Can I recharge the batteries through the emergency power port?

A: No. The emergency port is for temporary power only. We strongly recommend replacing depleted batteries with new ones—**DO NOT** attempt to recharge batteries through this port.

FCC Statement

This device complies with part 15 of the FCC Rules. Operation is subject to the following two conditions:

- (1) This device may not cause harmful interference, and
- (2) this device must accept any interference received, including interference that may cause undesired operation.

Warnings:

Please keep an eye on the remaining battery power of the product regularly, we highly recommend that you replace the battery when the product falls below 30% power.

Warranty:

We provide 90 Days limited warranty.
Any problem, please feel free to contact us.

E-mail us at: Support2@FILTA.CN (Response within 12 business hours)