



<b>EAN:</b>	4013288210081	<b>Size:</b>	105x45x30 mm
<b>Part number:</b>	05004577001	<b>Weight:</b>	99 g
<b>Article number:</b>	8790 C Impaktor	<b>Country of origin:</b>	TW
		<b>Customs tariff number:</b>	82042000

- For use with electric or pneumatic wrenches with 12.5 mm = 1/2" drive
- Impaktor technology for above-average service life
- Hexagon profile allows precise and profile-friendly screwdriving with high power transmission
- With Take it easy tool finder: colour coding by size
- With cross hole and ring socket to attach the safety pin and safety ring of machine operated tools

Impaktor socket for use with electric or pneumatic impact wrenches with 12.5mm = 1/2" drive. The Impaktor technology ensures above-average service life even under extreme conditions. With Take it easy tool finder with colour coding by size - for easy and fast location of the required tool. With hexagonal profile and grooved socket. The hexagon profile allows the transmission of high forces and puts less strain on the edges of bolts or screw heads than a double hexagon profile. For hexagon headed bolts, screws and nuts.

**Web link**  
<https://www.wera.de/en/05004577001>

Wera - 8790 C Impaktor  
 05004577001 - 4013288210081

Wera Werkzeuge GmbH  
 Korzter Straße 21-25  
 D-42349 Wuppertal  
 Tel: +49 (0)2 02 / 40 45-0  
 E-Mail: [info@wera.de](mailto:info@wera.de)

**For electric or pneumatic wrenches**



Particularly suitable for use with customary impact drivers



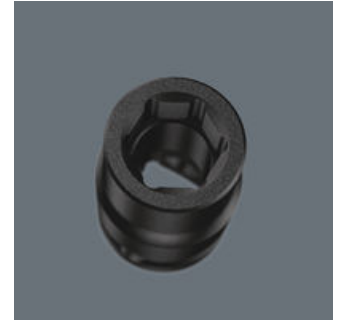
The Impaktor technology ensures above-average service life of the Impaktor socket wrench plug-ins even under extreme conditions.

**Cross hole and ring socket**



Thanks to the hole and the ring socket, the tools can be held securely on the power tool with a safety pin or an O-ring.

**Profile-friendly power transmission**



The hexagon profile offers the transmission of high forces and loads the edges of the bolt or the screw head less than a double hexagon profile. Fine-toothed ratchets also make use of a double hexagon profile superfluous, even in confined spaces, thanks to their small return angle.

**Take it easy tool finder system**



Take it easy tool finder system - with profile and size colour-coding for quick and easy tool selection. Colour-coded system for hexagon drive screws (L-Keys, Zyklop bit sockets), external hex drive screws and nuts (Joker wrenches, Zyklop sockets and Zyklop bit sockets with holding function), and TORX® drive screws (L-Keys, Zyklop bit sockets).



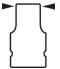

**Web link**

<https://www.wera.de/en/05004577001>

Wera - 8790 C Impaktor  
05004577001 - 4013288210081

Wera Werkzeuge GmbH  
Korzter Straße 21-25  
D-42349 Wuppertal  
Tel: +49 (0)2 02 / 40 45-0  
E-Mail: [info@wera.de](mailto:info@wera.de)

Further versions in this product family:

					
		mm	mm	mm	mm
05004570001	tuerkis_339C	13.0	38.0	21.0	24.0
05004571001	pink_241C	14.0	38.0	22.0	24.0
05004572001	weiss	15.0	38.0	24.0	24.0
05004573001	violett_2735C	16.0	38.0	24.0	24.0
05004574001	rot_200C	17.0	38.0	26.0	26.0
05004575001	leichtgruen_375C	18.0	38.0	28.0	28.0
05004576001	blau_307C	19.0	38.0	28.0	28.0
<b>05004577001</b>	<b>leuchtpink_232C</b>	<b>20.0</b>	<b>38.0</b>	<b>26.0</b>	<b>30.0</b>
05004578001	gruen_363C	21.0	38.0	26.0	30.0

**Web link**<https://www.wera.de/en/05004577001>Wera - 8790 C Impaktor  
05004577001 - 4013288210081Wera Werkzeuge GmbH  
Korzter Straße 21-25  
D-42349 Wuppertal  
Tel: +49 (0)2 02 / 40 45-0  
E-Mail: [info@wera.de](mailto:info@wera.de)