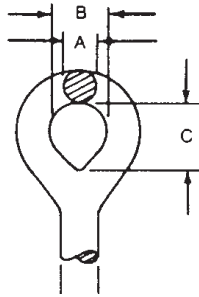


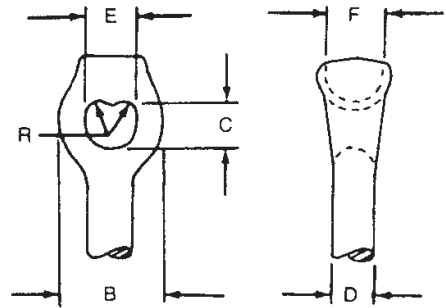
RODS, ANCHOR, GALVANIZED

Available for one, two, or three guys for use with expanding and cross-plate anchors. Thimbleye®, Twineye® and Tripleye® rods distribute pulling stresses uniformly over individual strands of guy wire and keep the guy wire from spreading, kinking, or bending. The drop-forged eye of each anchor rod is stronger than the rod itself. Rod length and diameter are stamped below each rod eye. Each rod is threaded 3-1/2" minimum length. Nuts included.



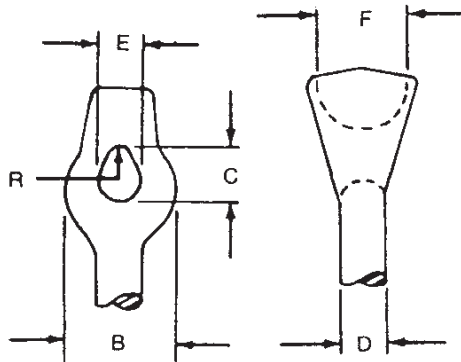
Ovaley Adapter

D	A	B	C
5/8"	9/16"	1-1/2"	2"
1"	7/8"	1-1/2"	2"



Twineye® Adapter

D	*R	B	C	E	F
5/8"	7/32"	1-3/4"	7/8"	15/16"	1-1/4"
3/4"	1/4"	2"	1"	1-1/16"	1-3/8"
1"	5/16"	2-5/8"	1-3/16"	1-5/16"	1-1/2"
1-1/4"	3/8"	2-15/16"	1-1/4"	1-9/16"	1-5/8"



Thimbleye® Adapter

D	*R	B	C	E	F
1/2"	3/16"	1-3/4"	9/16"	1/2"	1-1/4"
5/8"	1/4"	1-1/2"	11/16"	9/16"	1-3/8"
3/4"	9/32"	1-5/8"	13/16"	11/16"	1-1/2"
1"	13/16"	2-1/16"	1-1/8"	15/16"	1-5/8"

Tripleye® Adapter

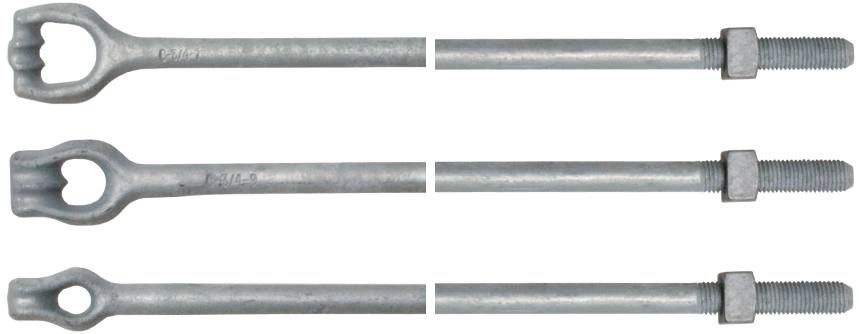
D	*R	*R1	B	C	E	F
3/4"	1/4"	7/32"	2-1/2"	1-11/16"	1-1/2"	1-1/4"
1"	1/4"	7/32"	2-9/16"	1-11/16"	1-5/8"	1-1/2"
1-1/4"	9/32"	1/4"	2-7/8"	1-11/16"	1-11/16"	1-5/8"



RODS, ANCHOR, GALVANIZED

Tensile Strength** / Extra Nut

Rod Size, in.	Strength, lb.	Nut Part No.
1/2	10,000	55058P
5/8	16,000	55006P
3/4	23,000	55312P
1	36,000	55320P
1-1/4	58,000	56001P



Anchor Rods

Catalog No.				Size	±Protected Rods - Catalog No.		
Thimbleye® Adapter	Twineye® Adapter	Tripleye® Adapter	Ovaleye Adapter		Thimbleye® Adapter	Twineye® Adapter	Tripleye® Adapter
5305	—	—	—	1/2 x 5'	—	—	—
5306	—	—	—	1/2 x 6'	—	—	—
5307	—	—	—	1/2 x 7'	—	—	—
5315	—	—	—	5/8" x 5'	—	—	—
†*5316	5346	—	—	5/8" x 6'	—	—	—
†*5317	†*5347	—	PS6417	5/8" x 7'	—	—	—
†*5318	†*5348	—	—	5/8" x 8'	—	—	—
*5326	*5356	—	—	3/4" x 6'	C2000088	C2000092	—
*5327	*5357	*7557	—	3/4" x 7'	C2000089	C2000093	—
†*5328	†*5358	7558	—	3/4" x 8'	C2000090	C2000094	C2000098
—	†*5359	7559	—	3/4" x 9'	—	C2000095	C2000097
—	†5360	—	—	3/4" x 10'	C2000091	C2000096	—
*5338	*5368	7568	—	1" x 8'	C2000102	—	C2000105
—	†5369	—	—	1" x 9'	—	C2000100	—
†*5340	†*5370	7570	6440	1" x 10'	C2000103	C2000101	C2000104
—	—	C2000028	—	1-1/4 x 8'	—	—	—
—	15129	7574	—	1 1/2 x 10'	—	—	—

*IEEE Standard

†RUS Listed.

±Galvanized rod and square nuts meet IEEE specification plus have polyethylene tube. No asphalt paint is added, so tube can slide down after anchor is expanded.

**Ultimate strength ratings apply to properly installed anchors only. Failure to install within 5° of alignment with the guy load will significantly lower strength.