



WORLDWIDE ELECTRIC MOTOR DATA SHEET

PEWWE5-12-215T



HORSEPOWER	5		
RPM / POLES	1200 / 6		
VOLTAGE / PHASE	230 / 460 V / 3		
FRAME	215T		
ENCLOSURE / DEGREE OF PROTECTION	TEFC / IP55		
FREQUENCY	60 HZ Suitable For 50 HZ Operation With 1.0 SF		
FULL LOAD SPEED	1180 RPM		
SERVICE FACTOR	1.25		
INSULATION CLASS	F		
FULL LOAD AMPS; 230 / 460	13.9 / 6.97 A (Usable On 208V At 15.4 A)		
LOCKED ROTOR AMPS (STARTING); 230 / 460	92 / 46 A		
NO LOAD CURRENT	7.1 / 3.55 A		
NEMA CODE LETTER	J		
EFFICIENCY / POWER FACTOR	<u>LOAD</u>	<u>EFF.</u>	<u>P.F.</u>
	100 %	89.5%	0.75
	75 %	89.6%	0.69
	50 %	89.3%	0.57
DUTY CYCLE	S1 / Continuous		
TORQUE	<u>FULL LOAD</u>	<u>LRT</u>	<u>BDT</u>
	22.2 lb.ft.	160%	240%
SLIP	1.67 %		
NEMA DESIGN	B		
MOMENT OF INERTIA	0.946 lb.ft. ²		
MAX. TIME LOCKED ROTOR (Hot)	22 Seconds		
SOUND PRESSURE LEVEL	64 dB (A)		
MAX. AMBIENT TEMPERATURE	40° C		
MAX. ELEVATION	3300 Ft.		
TEMPERATURE RISE (At Full Load)	80° C		
DE BEARING	6308ZZ C3		
ODE BEARING	6207ZZ C3		
REGREASING INT. - DE BEARING	---		
REGREASING INT. - ODE BEARING	---		
GREASE TYPE	SKF LGHP 2		
MOUNTING	F1		
ROTATION	Bi-Directional		
SHAFT MATERIAL	1045 Carbon Steel		
INVERTER RATING	10:1 CT / 20:1 VT PWM Type		
CONNECTION DIAGRAM	230 / 460 V - 9 Lead Y		
AREA CLASSIFICATION	Class I, Division 2, Groups A, B, C, D		
APPROXIMATE WEIGHT	179 lbs.		



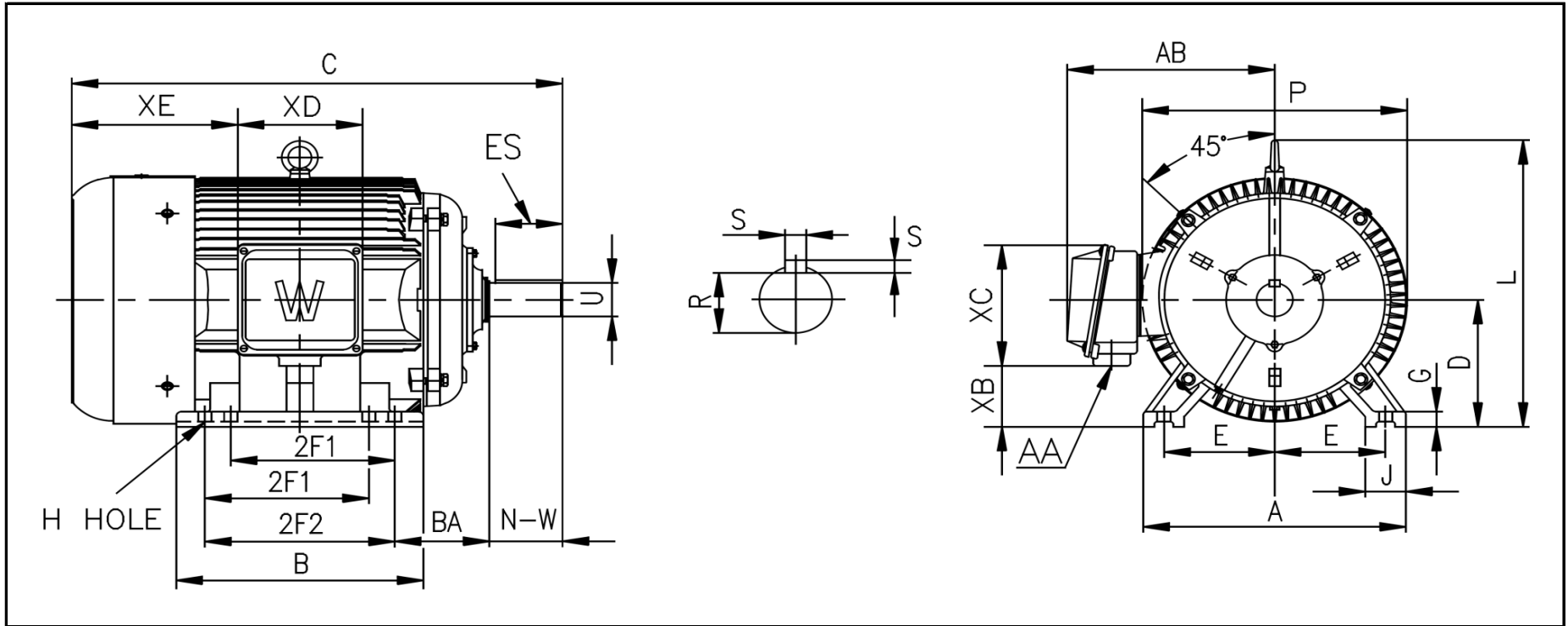
CC006A





WORLDWIDE ELECTRIC MOTOR DRAWING

PEWWE-215T



DIMENSIONS - INCHES

MOUNTING					A	B	C	D	G	J	P	L	AB
E	2F1	2F2	H	BA									
4.25	5.5	7	0.41	3.5	10.5	10.5	21	5.25	0.71	2.4	10.4	10.6	8.5

KEY		KEYSET	SHAFT		TERMINAL BOX				
S	ES	R	N-W	U	AA	XB	XC	XD	XE
0.312	2.41	1.201	3.38	1.375	1	3.3	5.1	4.6	7.75