



| | | | |
|------------------------|---------------|-------------------------------|--------------|
| EAN: | 4013288210333 | Size: | 117x45x20 mm |
| Part number: | 05004510001 | Weight: | 59 g |
| Article number: | 8790 HMA Deep | Country of origin: | TW |
| | | Customs tariff number: | 82042000 |

- Long sockets for low-lying screwdriving, often even with protruding threaded rods in small spaces
- Hexagonal profile enables precise bolting with high power transmission and preserves the profile
- With Take it easy tool finder: colour coding by size
- Knurling on lower end for more grip when used manually.
- For manual and machine operation (non-impact), ball intercept ring
- Made of matt chromed chrome-vanadium

Long 1/4" hand and machine socket (ISO 2725 part 3) with ball intercept ring; for external hexagonal bolts and sockets. For use in manual and machine operation (non-impact), even with low-lying screwdriving and protruding threaded rods. With Take it easy tool finder with colour coding by size - for easy and fast location of the required tool. Easy to grasp even with oily hands. The hexagon profile allows the transmission of high forces and puts less strain on the edges of bolts or screw heads than a double hexagon profile. Fine-toothed ratchets also make the use of a double hexagon profile superfluous, even in confined spaces, thanks to their small return angle.

Web link
<https://www.wera.de/en/05004510001>

Wera - 8790 HMA Deep
 05004510001 - 4013288210333

Wera Werkzeuge GmbH
 Korzter Straße 21-25
 D-42349 Wuppertal
 Tel: +49 (0)2 02 / 40 45-0
 E-Mail: info@wera.de

Long design



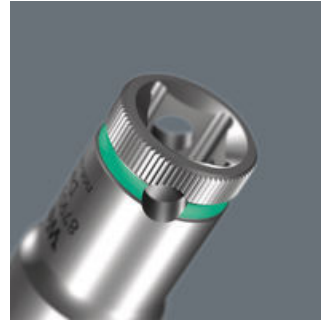
Thanks to the long design of the sockets, even couplings in tight spaces can be reached. Screwdriving at protruding thread rods can also be possible.

Profile-friendly power transmission



The hexagon profile offers the transmission of high forces and loads the edges of the bolt or the screw head less than a double hexagon profile. Fine-toothed ratchets also make use of a double hexagon profile superfluous, even in confined spaces, thanks to their small return angle.

Knurling



Knurling on lower end for more grip when used manually.

Chrome vanadium steel



The insert tools are suitable for high loads thanks to their chrome-vanadium steel design.

Take it easy tool finder system



Take it easy tool finder system - with profile and size colour-coding for quick and easy tool selection. Colour-coded system for hexagon drive screws (L-Keys, Zyklus bit sockets), external hex drive screws and nuts (Joker wrenches, Zyklus sockets and Zyklus bit sockets with holding function), and TORX® drive screws (L-Keys, Zyklus bit sockets).






Web link

<https://www.wera.de/en/05004510001>

Wera - 8790 HMA Deep
05004510001 - 4013288210333

Wera Werkzeuge GmbH
Korzter Straße 21-25
D-42349 Wuppertal
Tel: +49 (0)2 02 / 40 45-0
E-Mail: info@wera.de

Further versions in this product family:

| | |  |  |  |  |  |
|--------------------|---------------------|---|---|--|---|---|
| | | mm | inch | mm | mm | mm |
| 05004500001 | violett_2735C | 4.0 | - | 50.0 | 6.7 | 11.8 |
| 05004501001 | leuchtgruen_375C | 5.0 | - | 50.0 | 8.0 | 11.8 |
| 05004502001 | leuchtorange_152C | 5.5 | - | 50.0 | 8.6 | 11.8 |
| 05004503001 | blau_307C | 6.0 | - | 50.0 | 9.2 | 11.8 |
| 05004504001 | gelb_123C | 7.0 | - | 50.0 | 10.8 | 11.8 |
| 05004505001 | leuchtpink_232C | 8.0 | - | 50.0 | 11.8 | 11 |
| 05004506001 | gruen_363C | 9.0 | - | 50.0 | 12.8 | 12 |
| 05004507001 | leuchtgelb_yellowC | 10.0 | - | 50.0 | 14.7 | 12.8 |
| 05004508001 | cyan_2985C | 11.0 | - | 50.0 | 15.8 | 14.0 |
| 05004509001 | schwarz_blackC | 12.0 | - | 50.0 | 16.8 | 15.0 |
| 05004510001 | tuerkis_339C | 13.0 | - | 50.0 | 17.8 | 16.0 |
| 05004511001 | pink_241C | 14.0 | - | 50.0 | 19.8 | 17.0 |
| 05004512001 | weiss | 15.0 | - | 50.0 | 20.8 | 18.0 |
| 05004520001 | tuerkis_339C | - | 1/2" | 50.0 | 17.8 | 16.0 |

Web link

<https://www.wera.de/en/05004510001>

Wera - 8790 HMA Deep
05004510001 - 4013288210333

Wera Werkzeuge GmbH
Korzter Straße 21-25
D-42349 Wuppertal
Tel: +49 (0)2 02 / 40 45-0
E-Mail: info@wera.de